

What data tells us about the 2020 Edo Governorship Election

Kingmakers
Voting Pattern
Hotspots
Citizens Perception



September 2020

What data tells us about the 2020 Edo Governorship Election

Kingmakers
Voting Pattern
Hotspots
Citizens Perception

September 2020



© Yiaga Africa, 2020

Yiaga Africa, is a civic non-governmental organization promoting democracy, governance and development in Africa through advocacy, research and capacity building. Our goal is to build democratic societies anchored on the principles of inclusion, justice, transparency and accountability. Yiaga Africa operates as a citizens' movement poised with the onerous mandate of enhancing the quality of democratic governance, public accountability and civic participation.

Yiaga Africa is enhancing the quality of democracy using Watching The Vote as a platform for promoting cutting-edge electoral policies, credible elections, civic participation and democratic consolidation. Yiaga Africa has been involved in election observation since 2007 and it is one of the leading organizations working on elections in Nigeria.

All rights reserved. No part of this publication may be reproduced, store in a retrieval system, or transmitted in any form or by any means, electronic, mechanical, photocopying, recording or otherwise, without prior permission of Yiaga Africa.

Yiaga Africa
No 3, Off Frantz Fanon Crescent, 17 Road, 4 Avenue, Gwarinpa
Abuja, Nigeria
Tel: +234 703 231 7640; 8006000100
Email: watchingthevote@yiaga.org
www.yiaga.org
www.watchingthevote.org

Disclaimer: This publication has been produced by Yiaga Africa as part of her Open Election Data Initiative to promote electoral transparency and enhance the quality of citizens participation in elections. With the exception of the citizens perception survey, all the data were sourced from the Independent National Electoral Commission (INEC). Yiaga Africa certifies that the analysis in this report are factual and it reflects our analytical views not the views of our partners. Whilst due diligence has been exercised in the preparation of this report, Yiaga Africa accepts no responsibility for the errors or actions taken as a result of the information contained in this report.



KINGMAKERS

Facts



Edo recorded a 14% increase in the number of registered voters between the 2016 governorship election and 2019 general elections



The highest proportion of registered voters (58%) are concentrated in Edo South Senatorial district.



Ikpoba/Okha and Oredo LGAs in Edo South senatorial district have the largest number proportion of registered voters (14.3% and 14.2% respectively) while Igueben LGA in Edo Central district had the least proportion of registered voters (2.1%).



The PVC collection rate for Edo is 78%. Edo North senatorial district has the highest rate of PVC collection (84%). Both Edo Central and Edo South have a collection rate of 78%.

Facts



The collected PVCs in seven LGAs (Oredo, Ikpoba/Okha, Egor, Ovia North East, Orhionmwon in Edo South district and Etsako West, Akoko Edo in Edo North) constitute about two thirds (62%) of the total PVC collected.



Edo South has the highest proportion of uncollected PVCs (65%). Ikpoba/Okha LGA has 100, 588 uncollected PVC representing 20.8% of uncollected PVCs.



There are more male registered voters (52%) than female registered voters (48%) in Edo

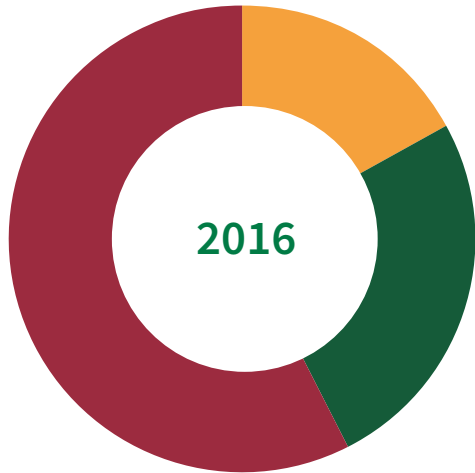


The highest proportion of male registered voters are located in Ovia South West LGA (60%) and Uhunmwode LGA (60%). Also, the highest proportion of female registered voters in Egor LGA (52%) and Etsako West LGA (52%)

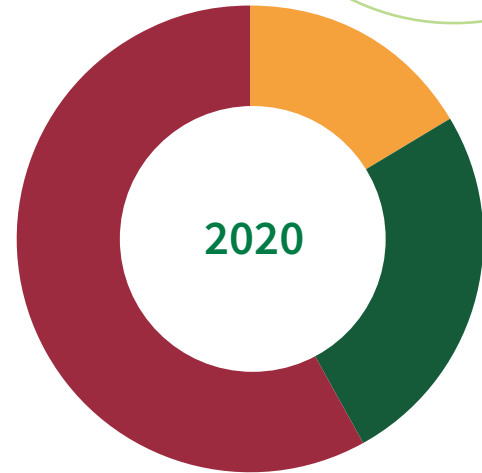


The highest proportion of registered voters in all LGAs are students except in Ovia South West and Uhunmwode LGA where majority of registered voters are farmers.

Registered voters in 2016 vs 2020



14% increase
→



Edo South

1,091,138 (57.4%)

Edo North

486,969 (25.6%)

Edo Central

322,116 (17.0%)

Total Registered Voters



1,900,223

Edo South

1,281,414 (58.0%)

Edo North

564,122 (25.5%)

Edo Central

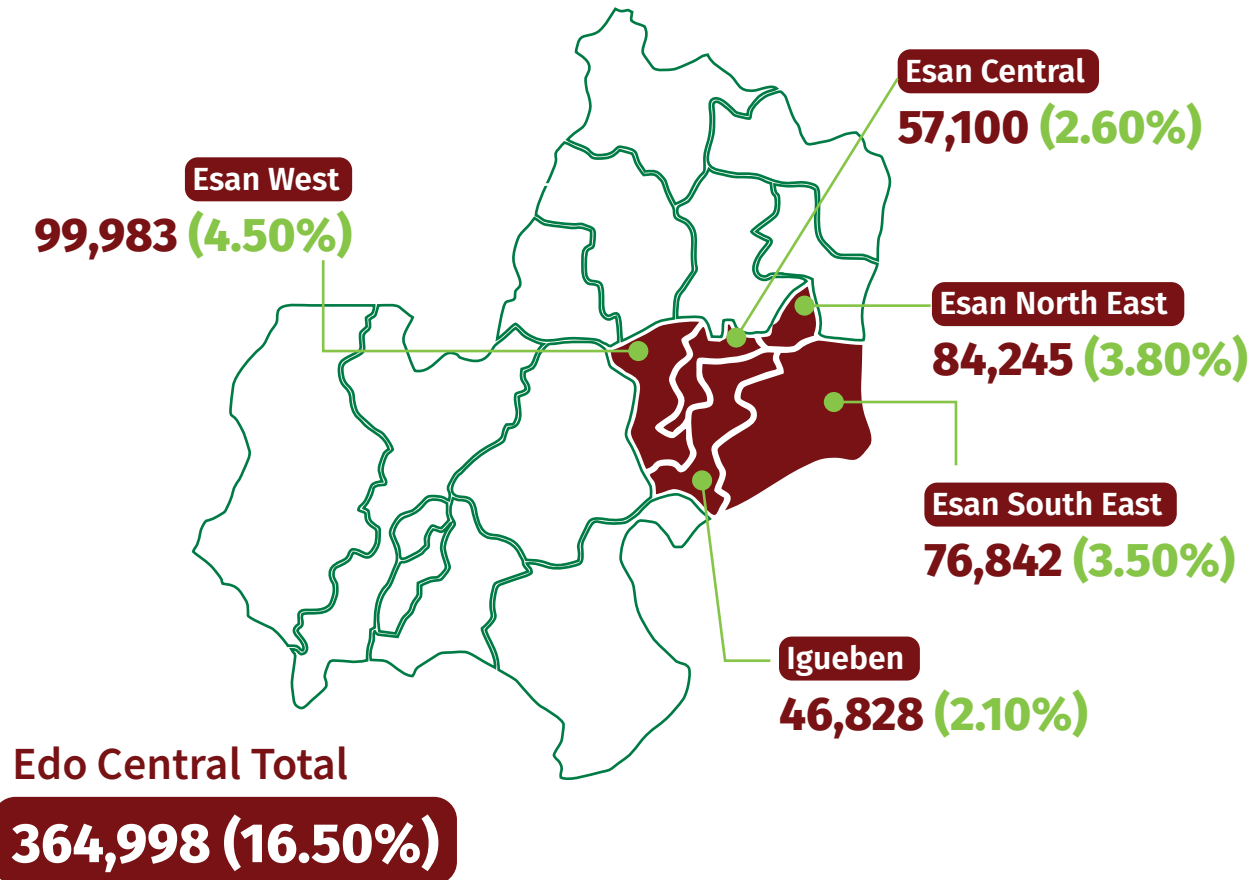
364,998 (16.5%)

Total Registered Voters



2,210,534

Distribution of Registered Voters by LGA

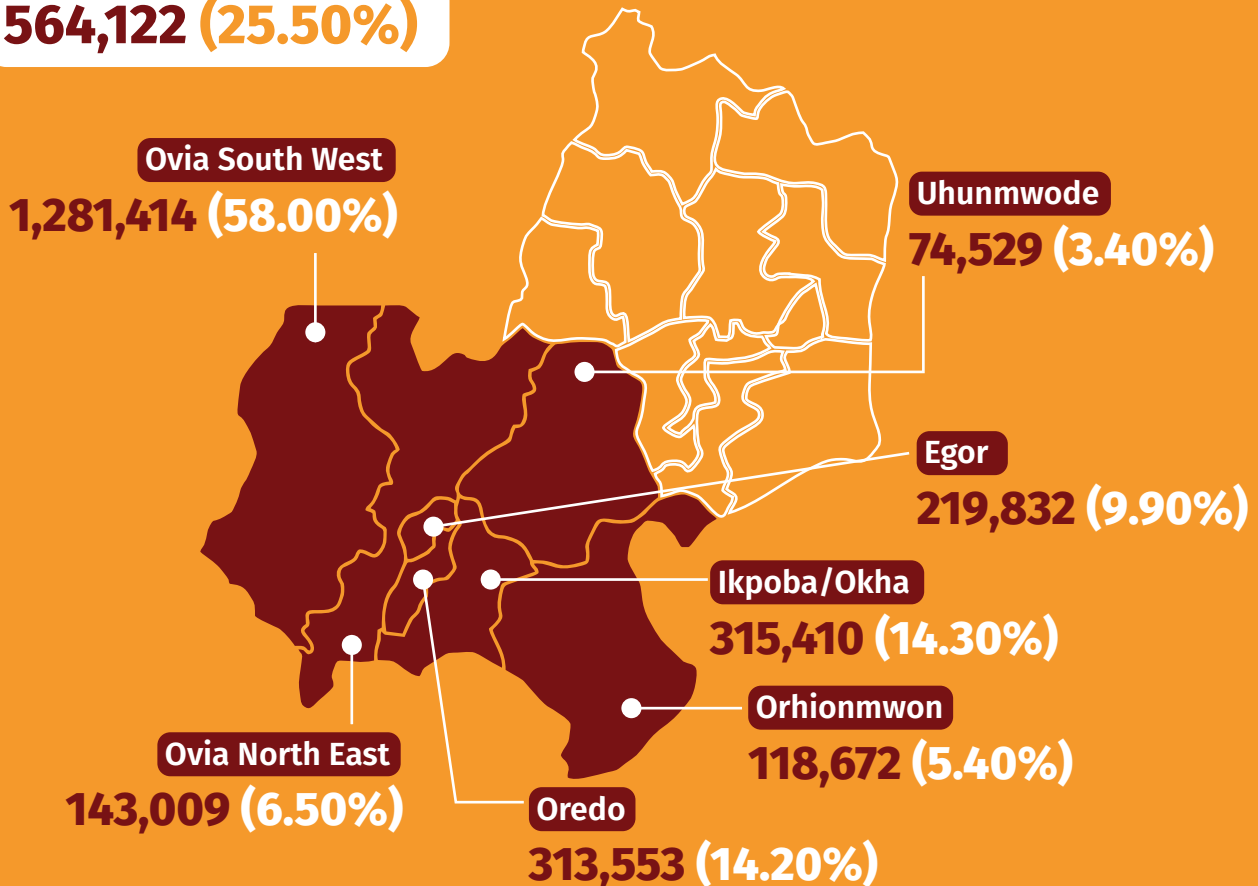




Distribution of Registered Voters by LGA

Edo South Total

564,122 (25.50%)



Age Distribution of Registered Voters



Youth (18-35)
1,105,338
50%



Middle Aged (36-50)
643,551
29.11%

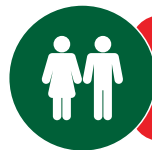


Elderly (51-70)
353,508
15.99%

Old (70+)
108,137
4.89%



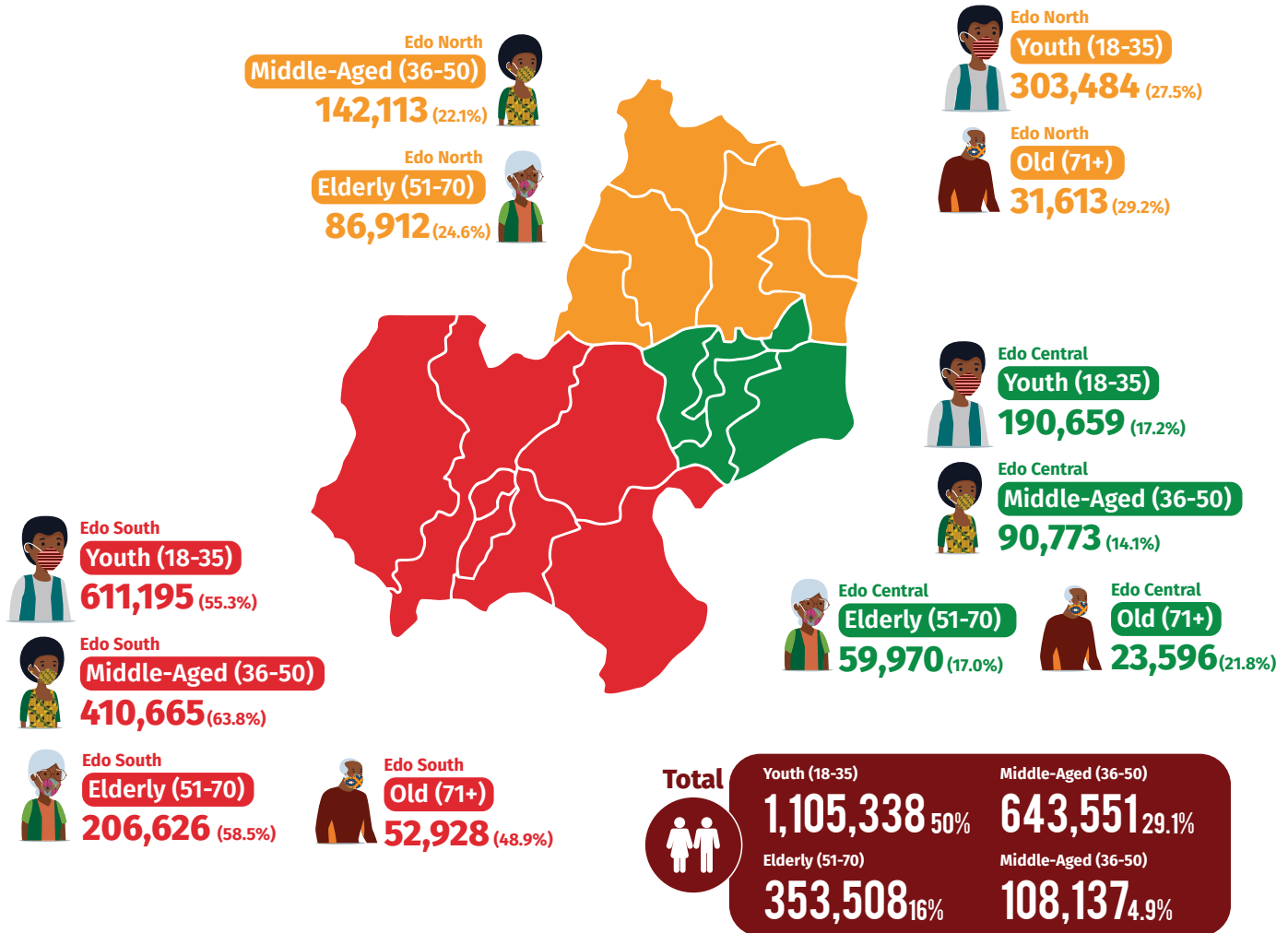
Total Registered Voters



2,210,534



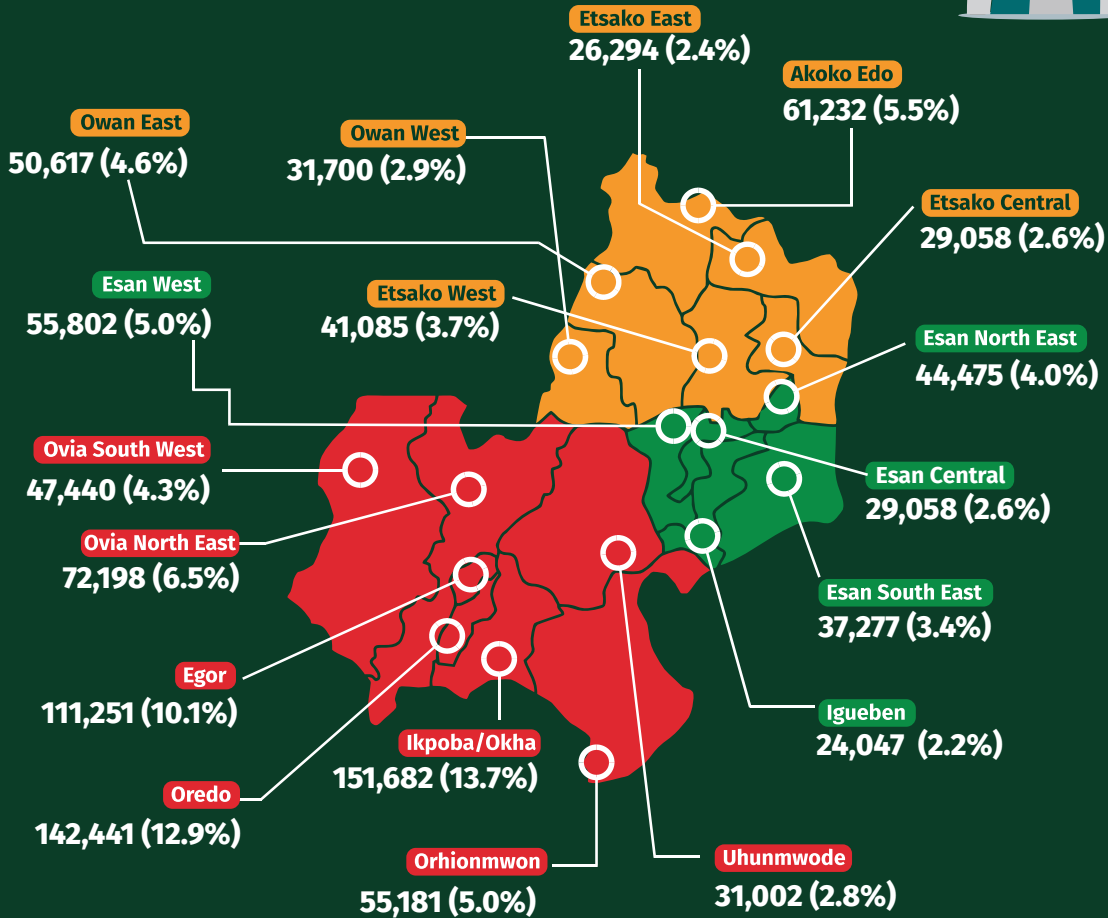
Distribution of Registered Voters by District and Age Group





Age distribution by LGA

Youth Registered Voters (18-35)



Registered Voters

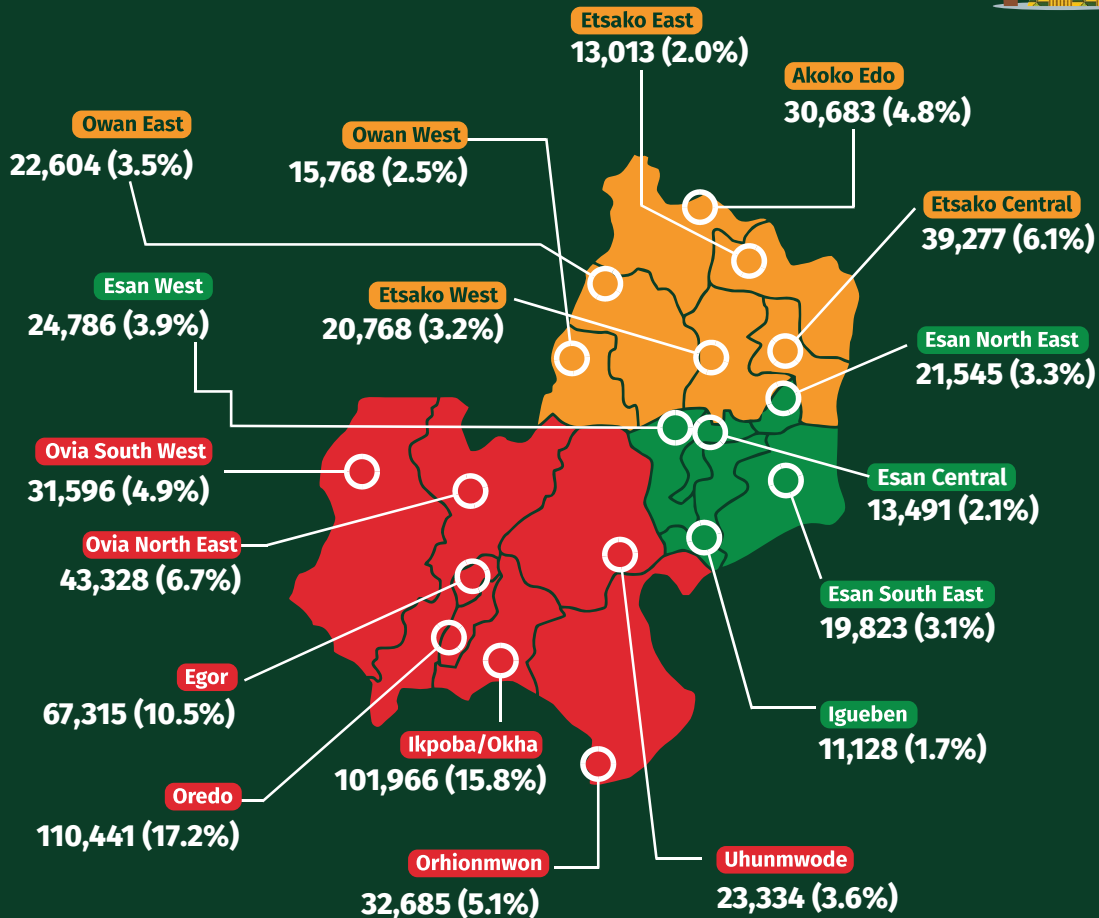


1,105,338



Age distribution by LGA

Middle-Aged Registered Voters (36-50)



Registered Voters

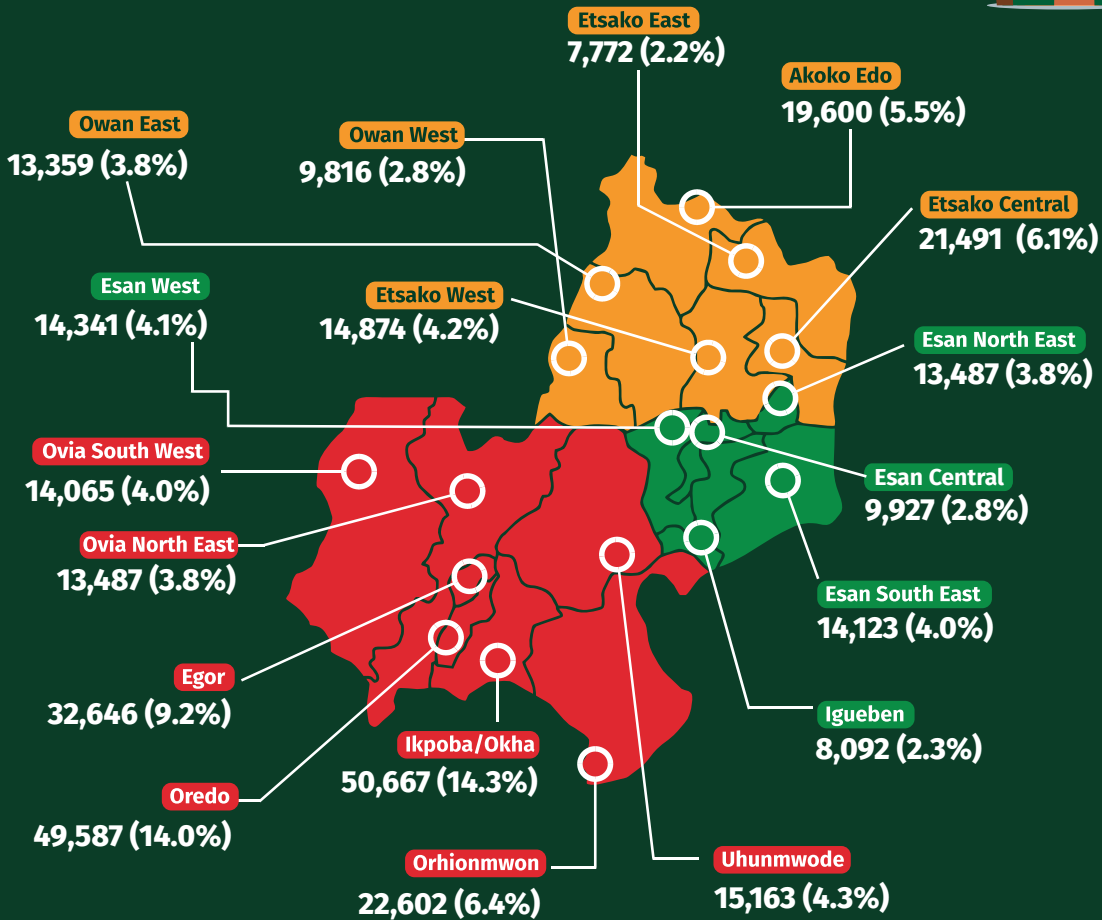


643,551



Age distribution by LGA

Elderly Registered Voters (51-70)



Registered Voters

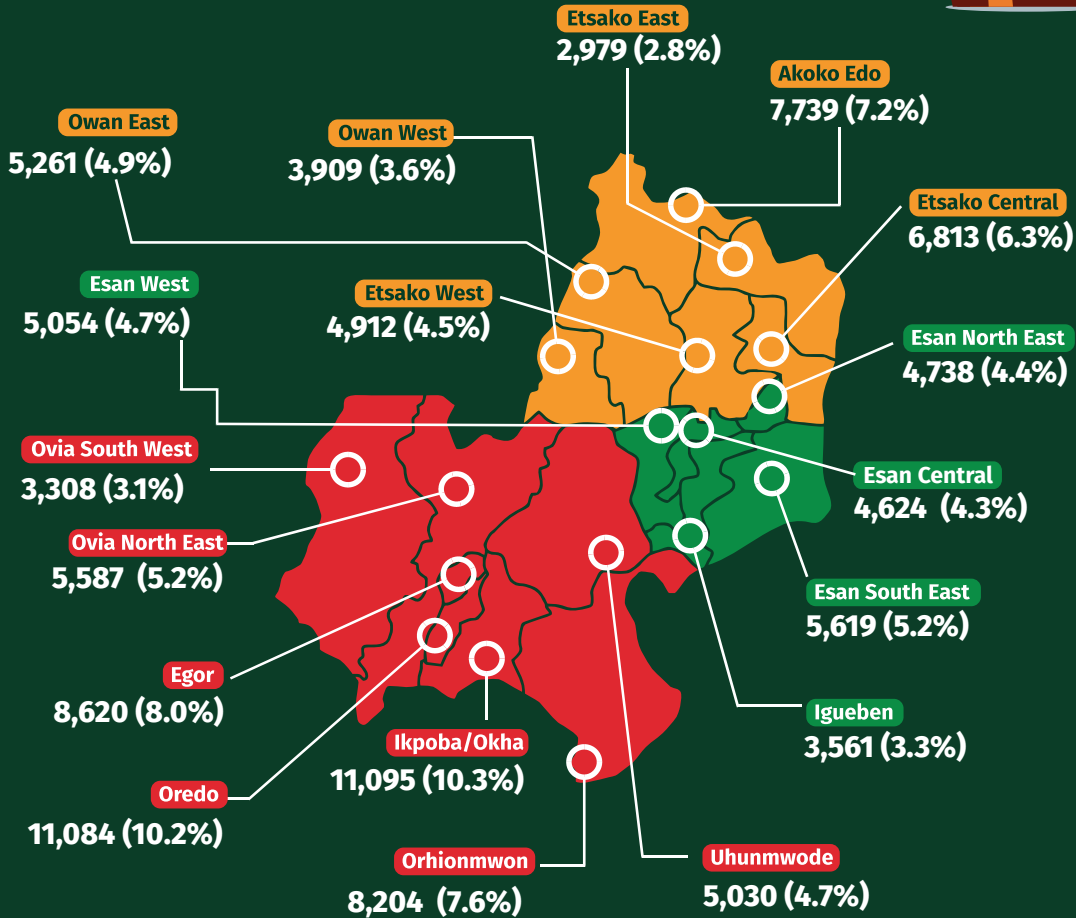


353,508



Age distribution by LGA

Old Registered Voters (70+)



Registered Voters



108,137

Gender Distribution of Registered Voters

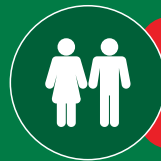


Male
1,159,325
52%



Female
1,051,209
48%

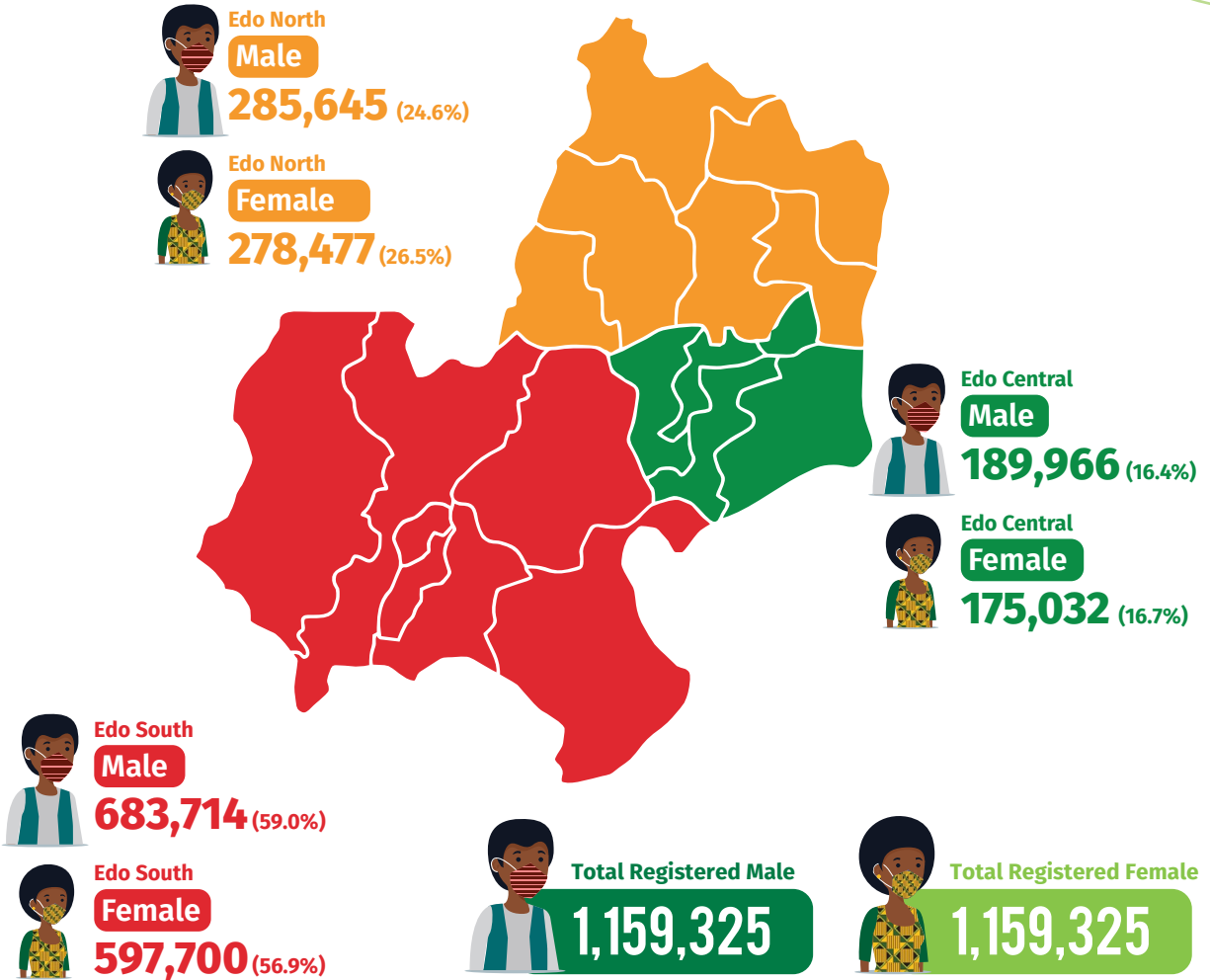
Registered Voters



2,210,534

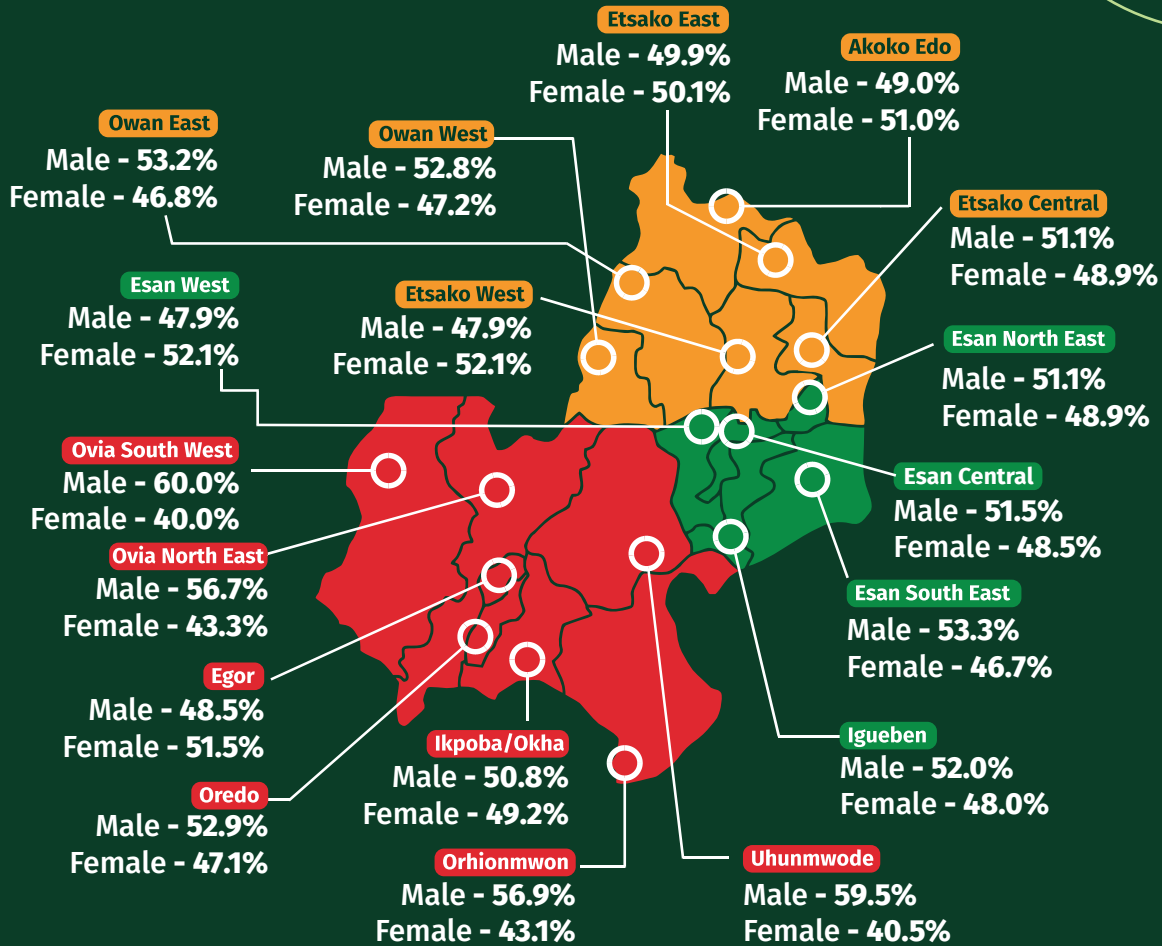


Male and Female Registered Voters by District





Male and Female Registered Voters by LGA



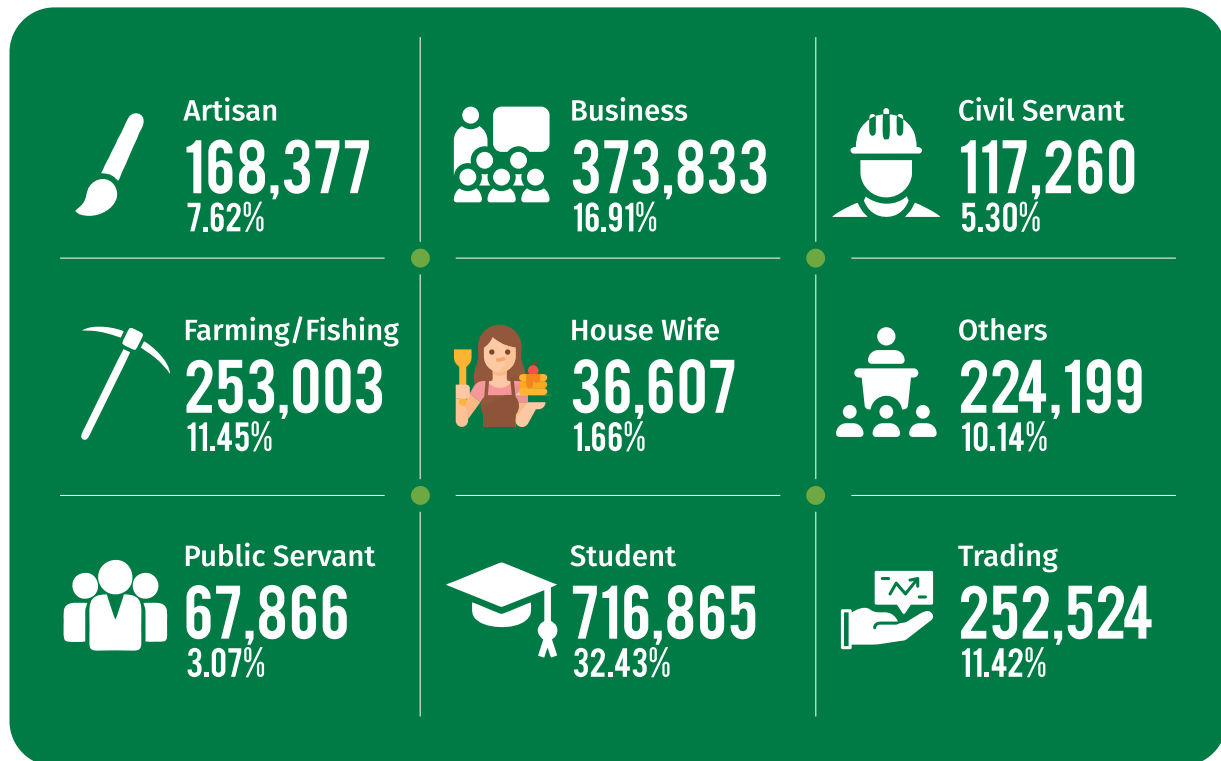
Registered Voters



108,137



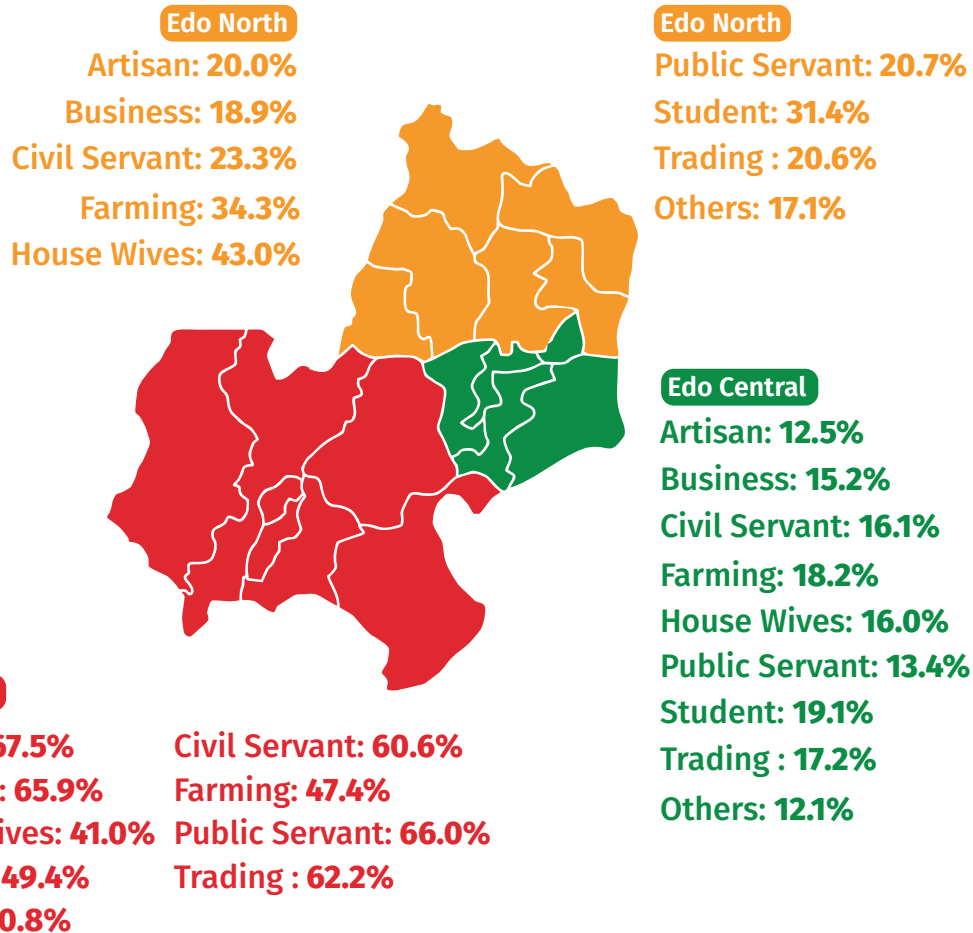
Occupational Profile of Registered Voters



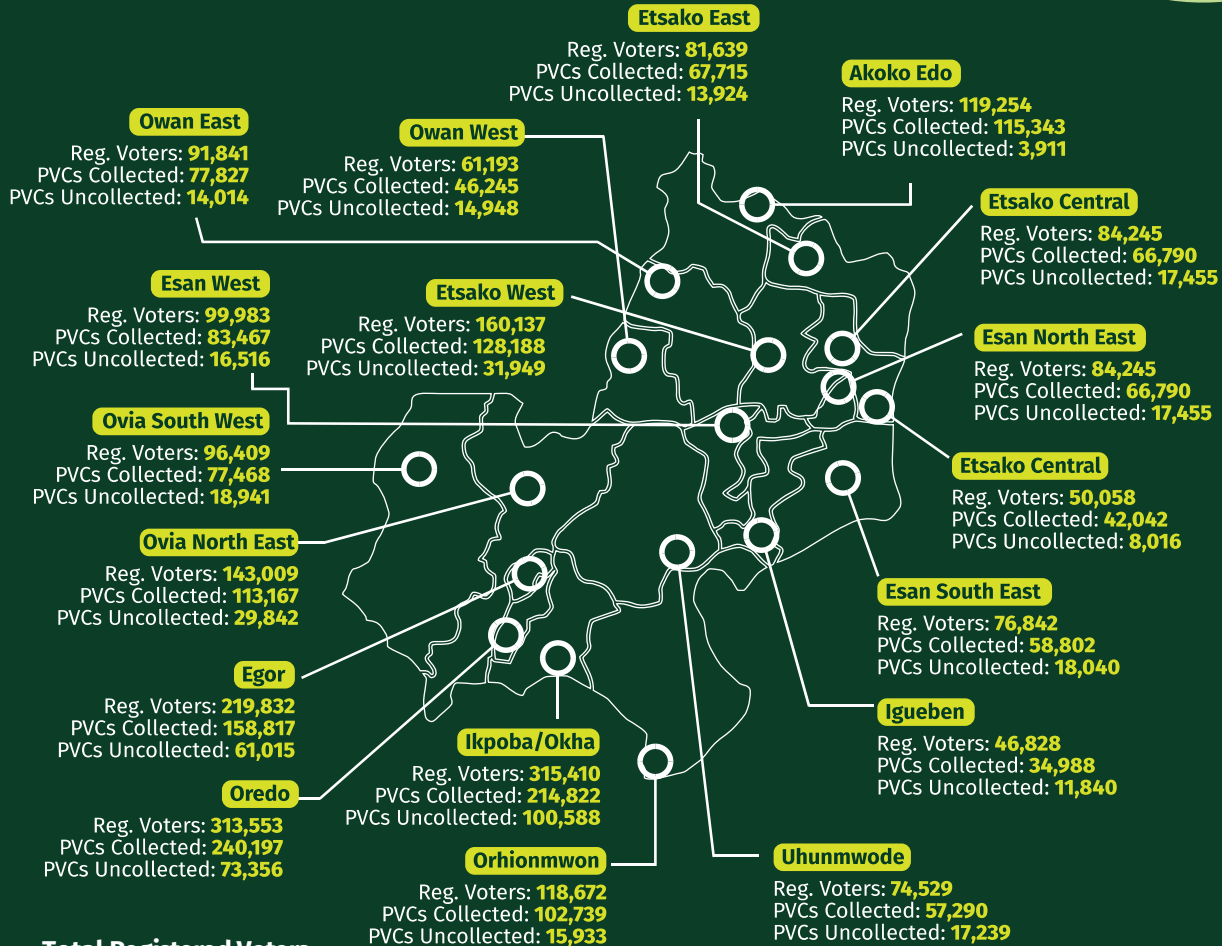
Total Registered Voters



Distribution of Registered Voters Occupation by District



Registered voters and PVC collection rate by LGA

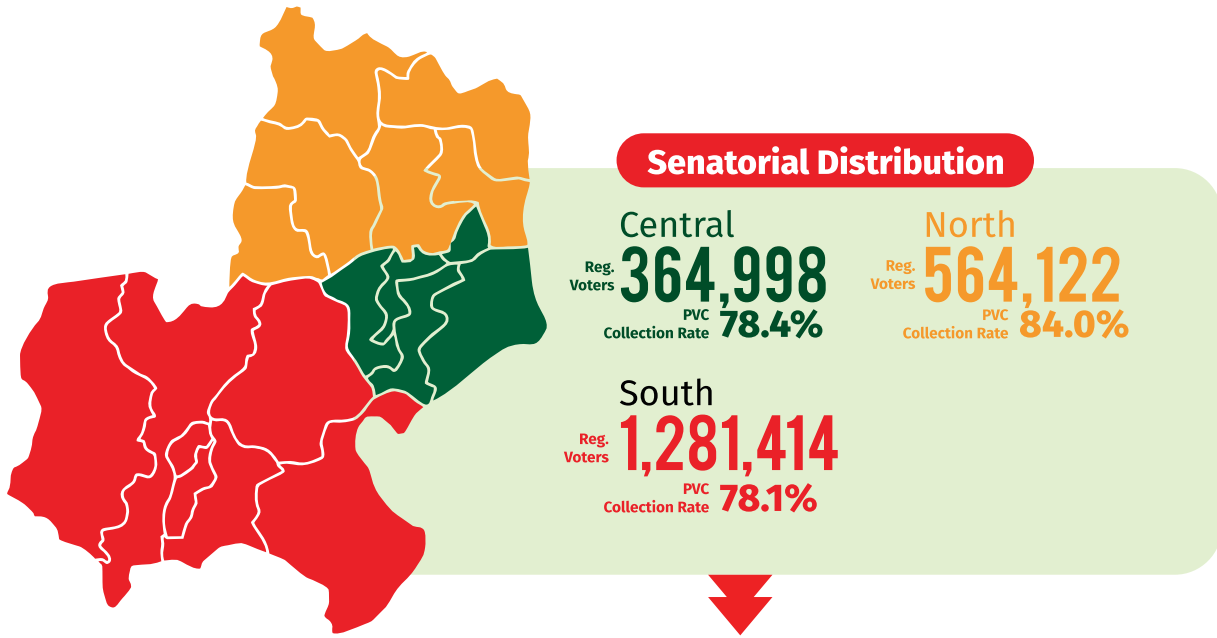


Total Registered Voters



2,210,534

Registered Voters and PVC Collection Rate by Senatorial District



 **Registered Voters**
2,210,534

 **Collected PVCs**
1,726,738

 **Uncollected PVCs**
483,796



VOTING PATTERN

Facts



In the 2011 Presidential election, Edo recorded 38.4% voter turnout. In 2016, it was 32% while in the 2019 general election turnout was 28% for the Presidential election and 32.8% for the state assembly election.



Etsako Central LGA in Edo North had the highest turnout (43%) compared to Egor LGA in Edo South with the lowest turnout (20%). Across the district, Edo North senatorial district recorded the highest turnout in the election.



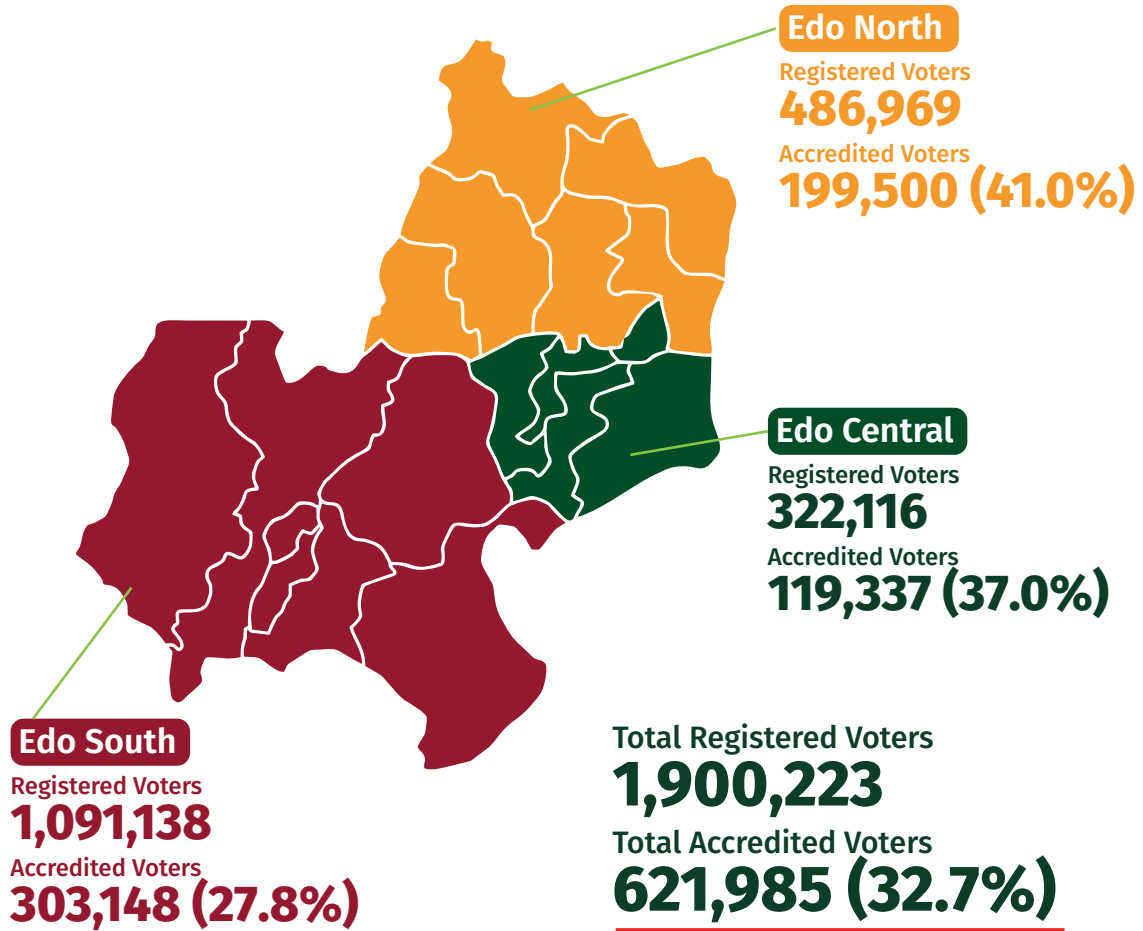
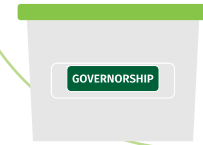
In the 2016 Edo governorship election, the APC and PDP scored 98% of total votes cast. The other 17 parties garnered only (2%) of the votes cast. Also, the APC scored 55% of valid votes while PDP got 43% of valid votes.



Edo South senatorial district determines majority of votes in Edo elections. In 2016, the highest proportion of votes cast came from Edo South senatorial district (49%) compared to Edo North and Edo Central senatorial districts (32% and 19% respectively). In the 2019, 47% of valid votes came from Edo South, 34.4% Edo North and 18.2% from Edo Central.

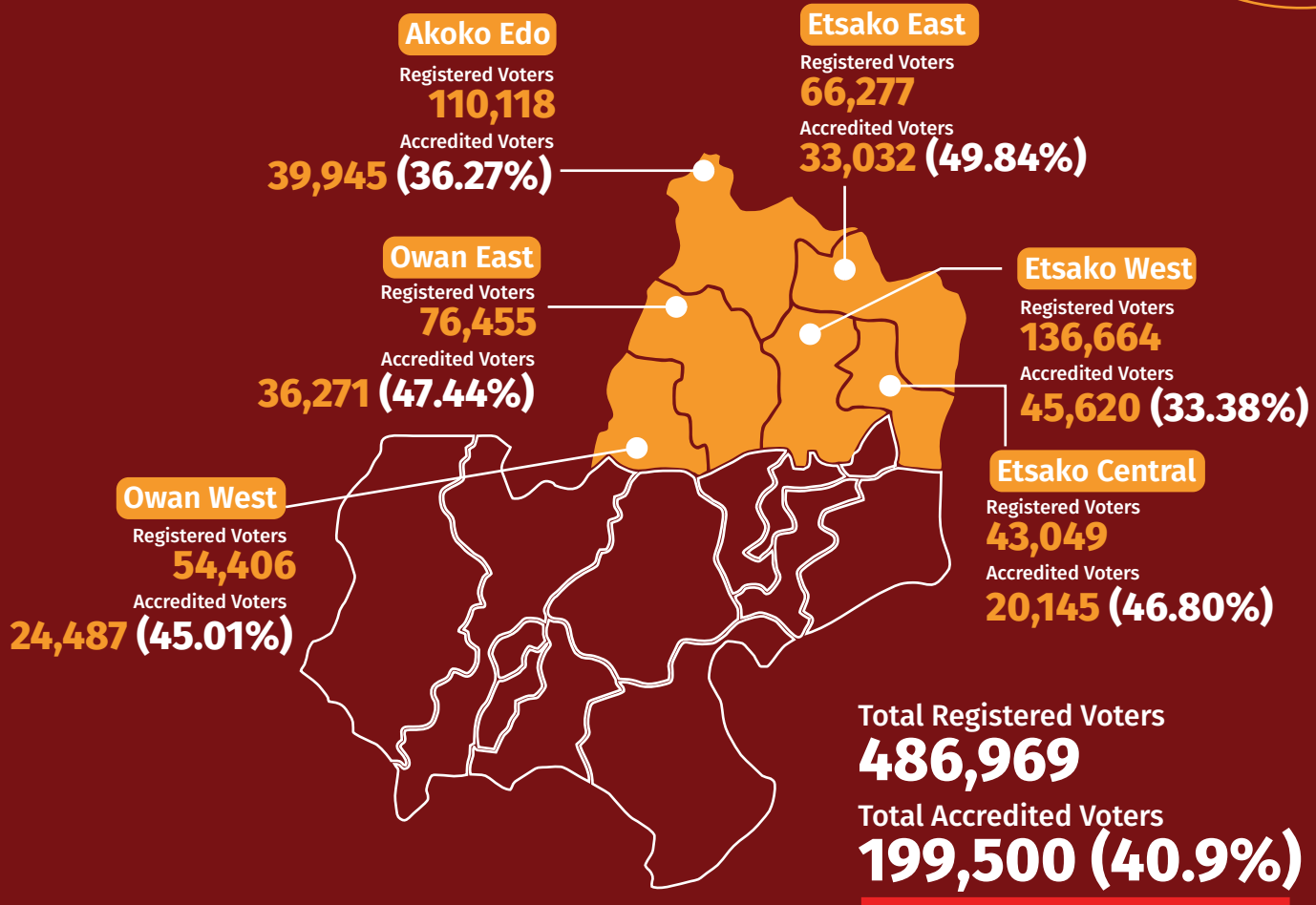
Voter Turnout in the 2016 Governorship Election

Voter turnout by Senatorial district

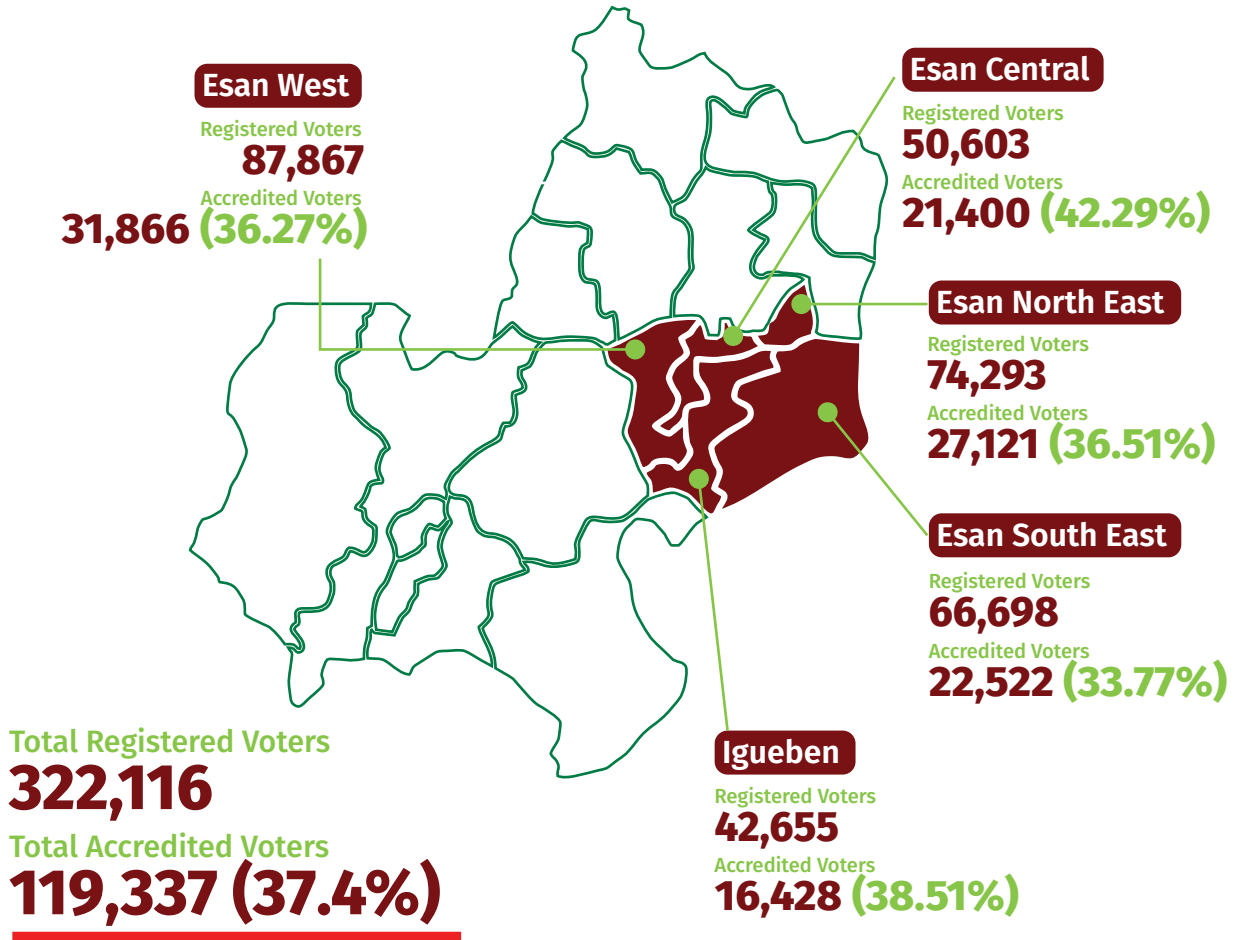
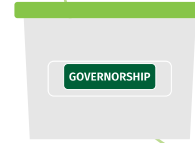




2016 Voter Turnout per LGA - Edo North

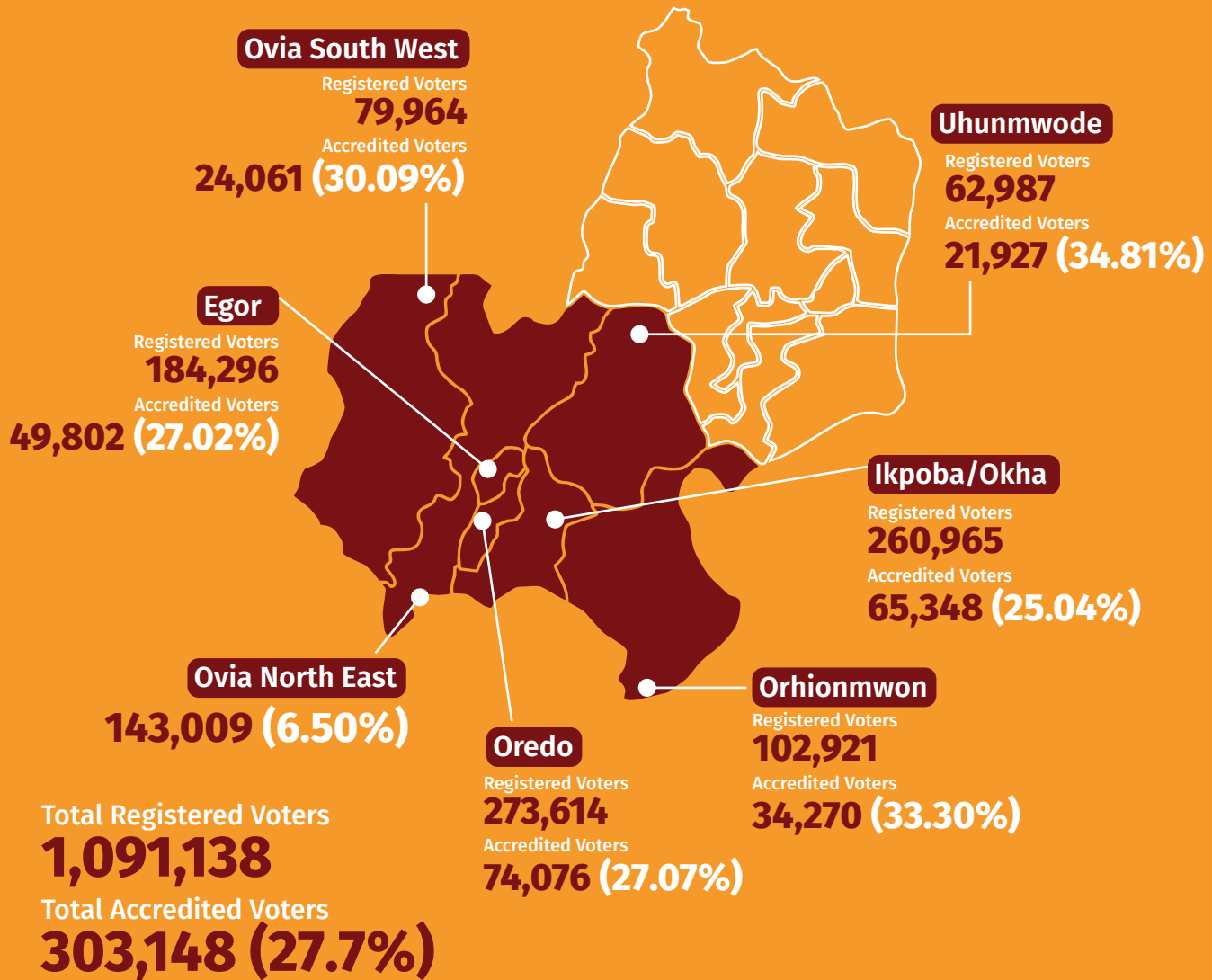


2016 Voter Turnout per LGA - Edo Central

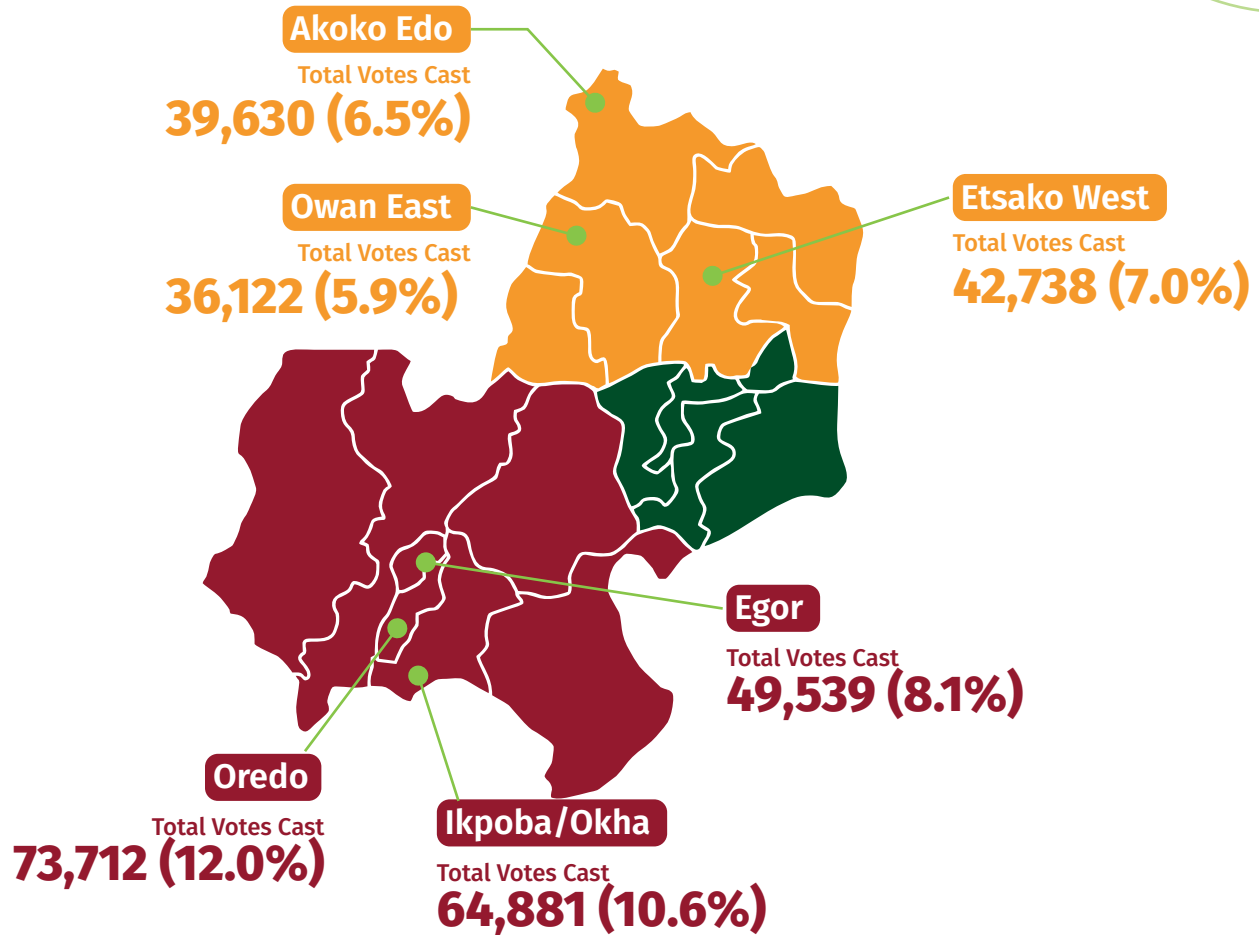




2016 Voter Turnout per LGA - Edo South



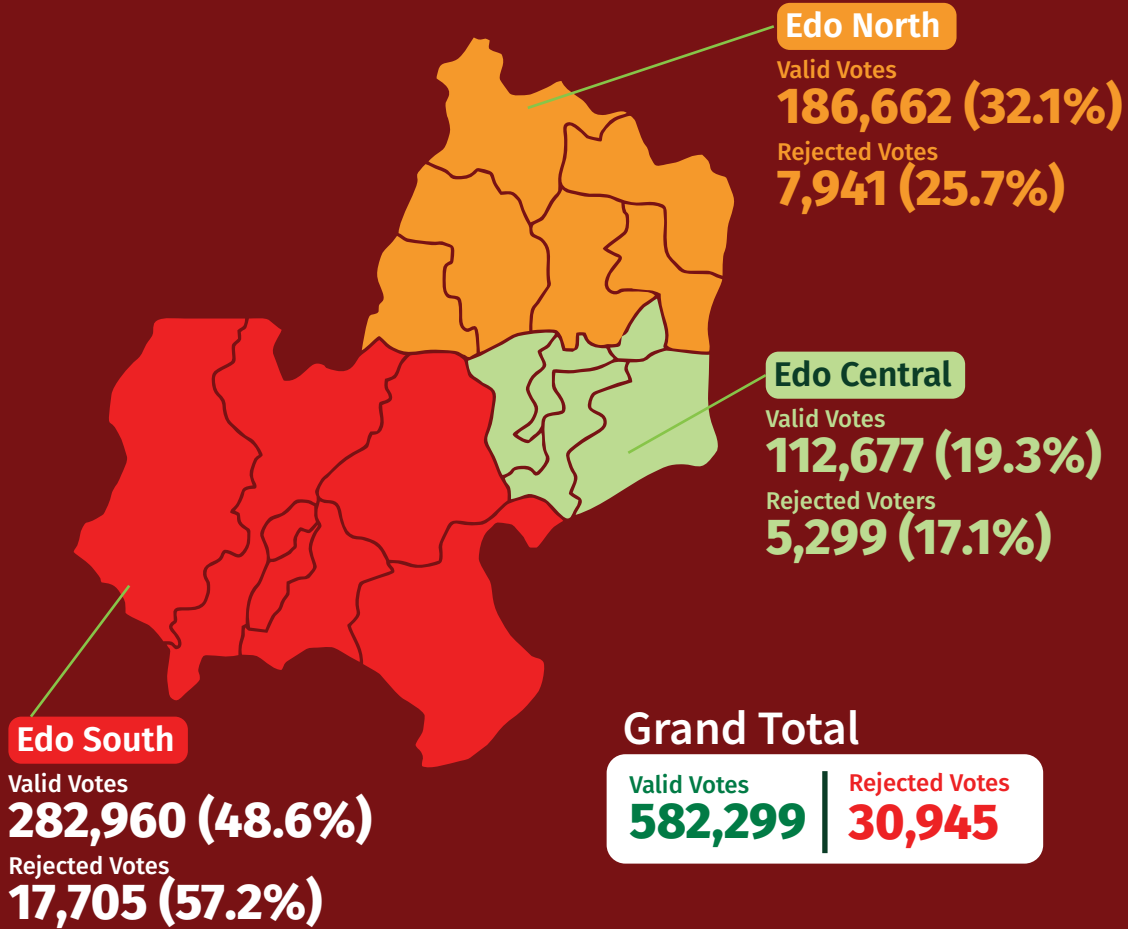
LGAs with Highest Votes Cast - 2016





Valid and Rejected Votes in the 2016 Governorship Election

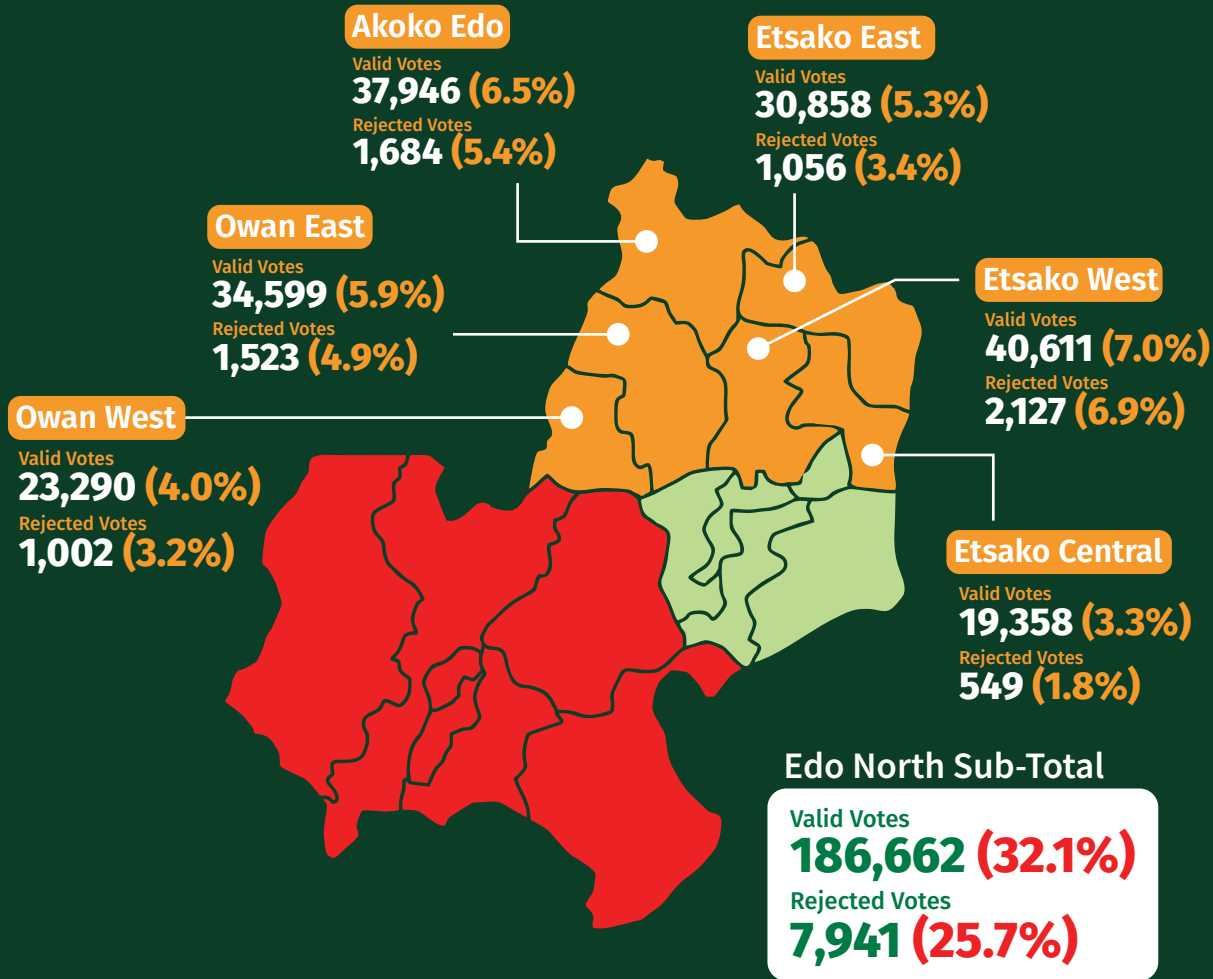
Valid and Rejected Votes by Senatorial district





Valid and Rejected Votes in the 2016 Governorship Election

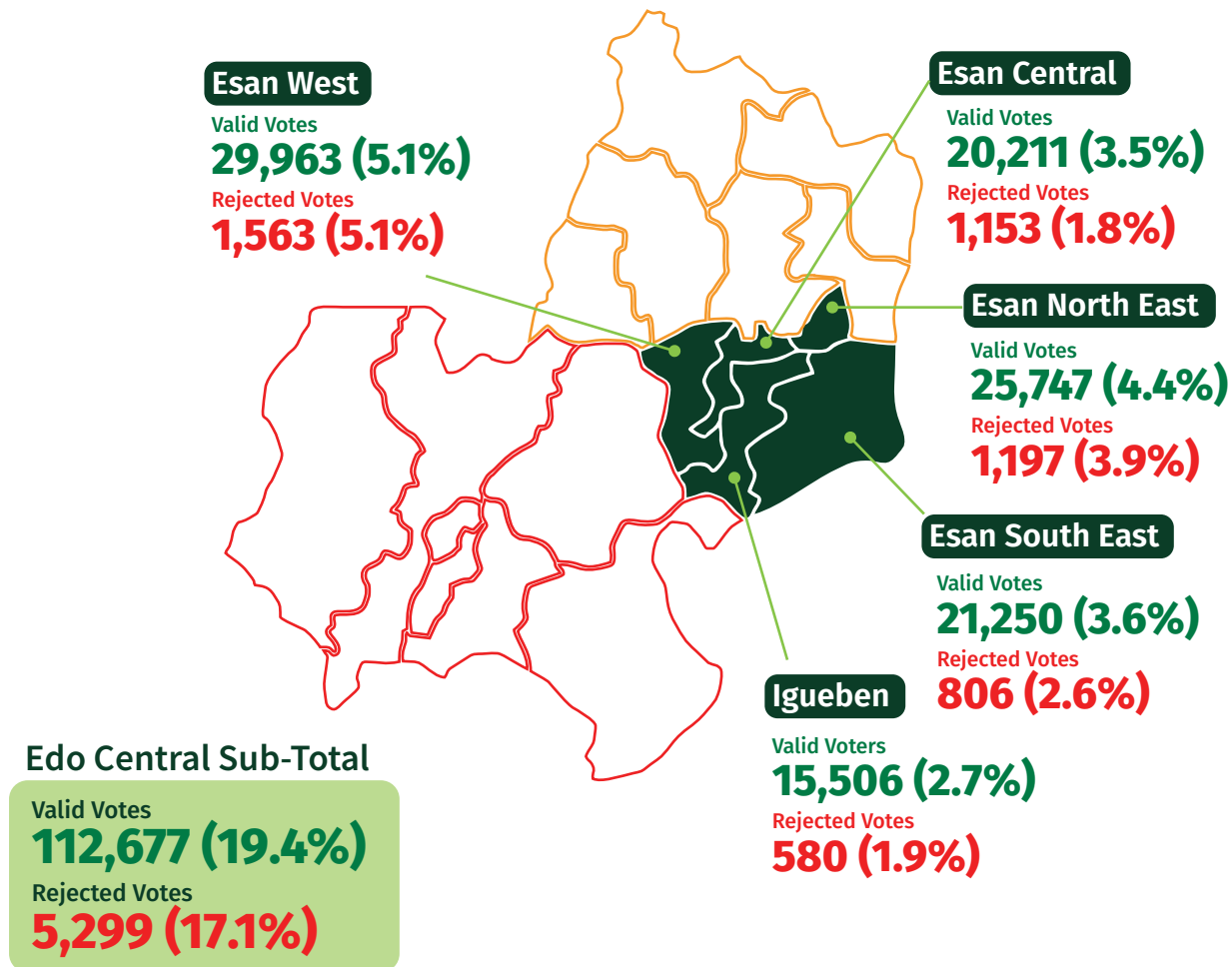
Valid and Rejected Votes by LGAs - Edo North





Valid and Rejected Votes in the 2016 Governorship Election

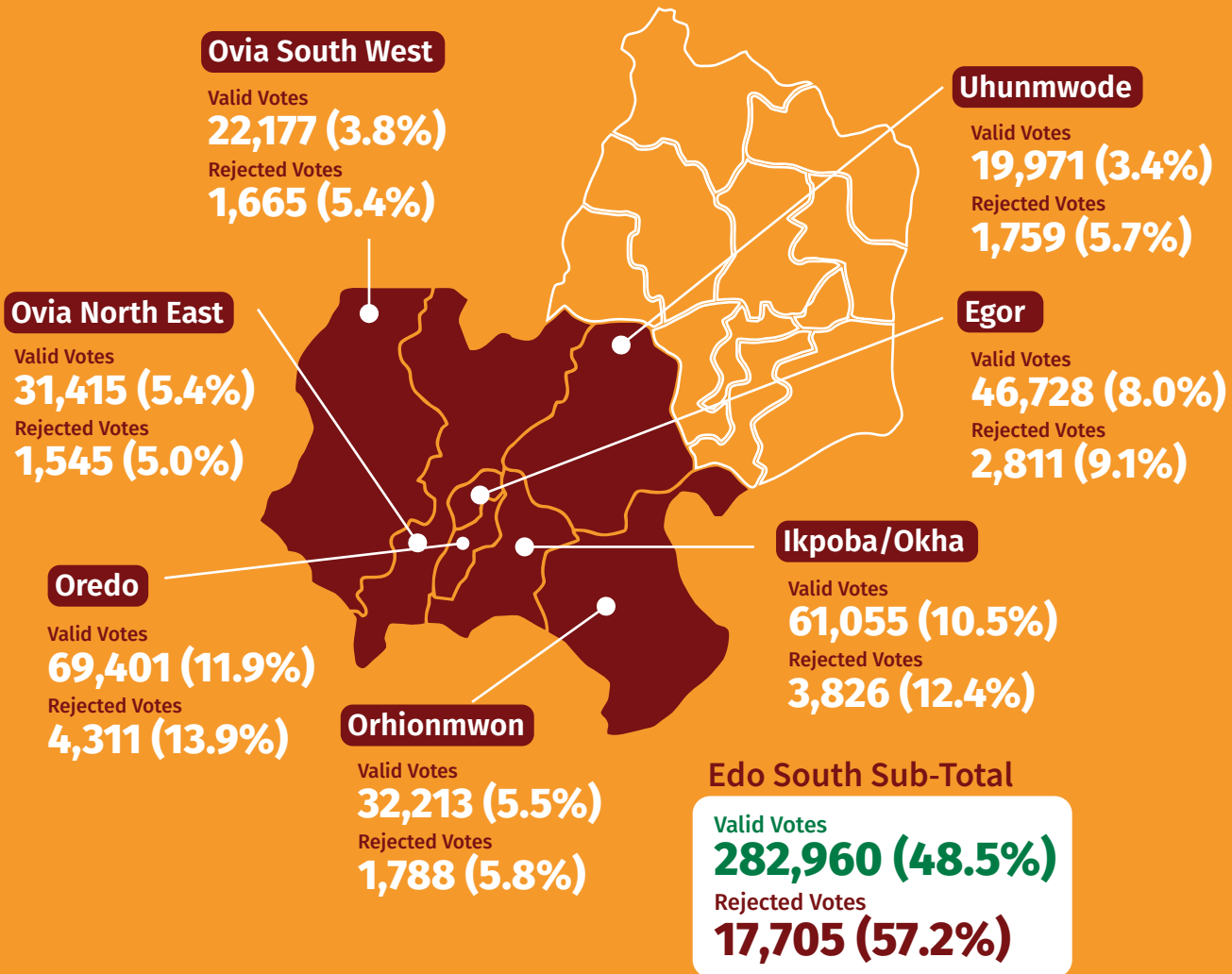
Valid and Rejected Votes by LGAs - Edo Central



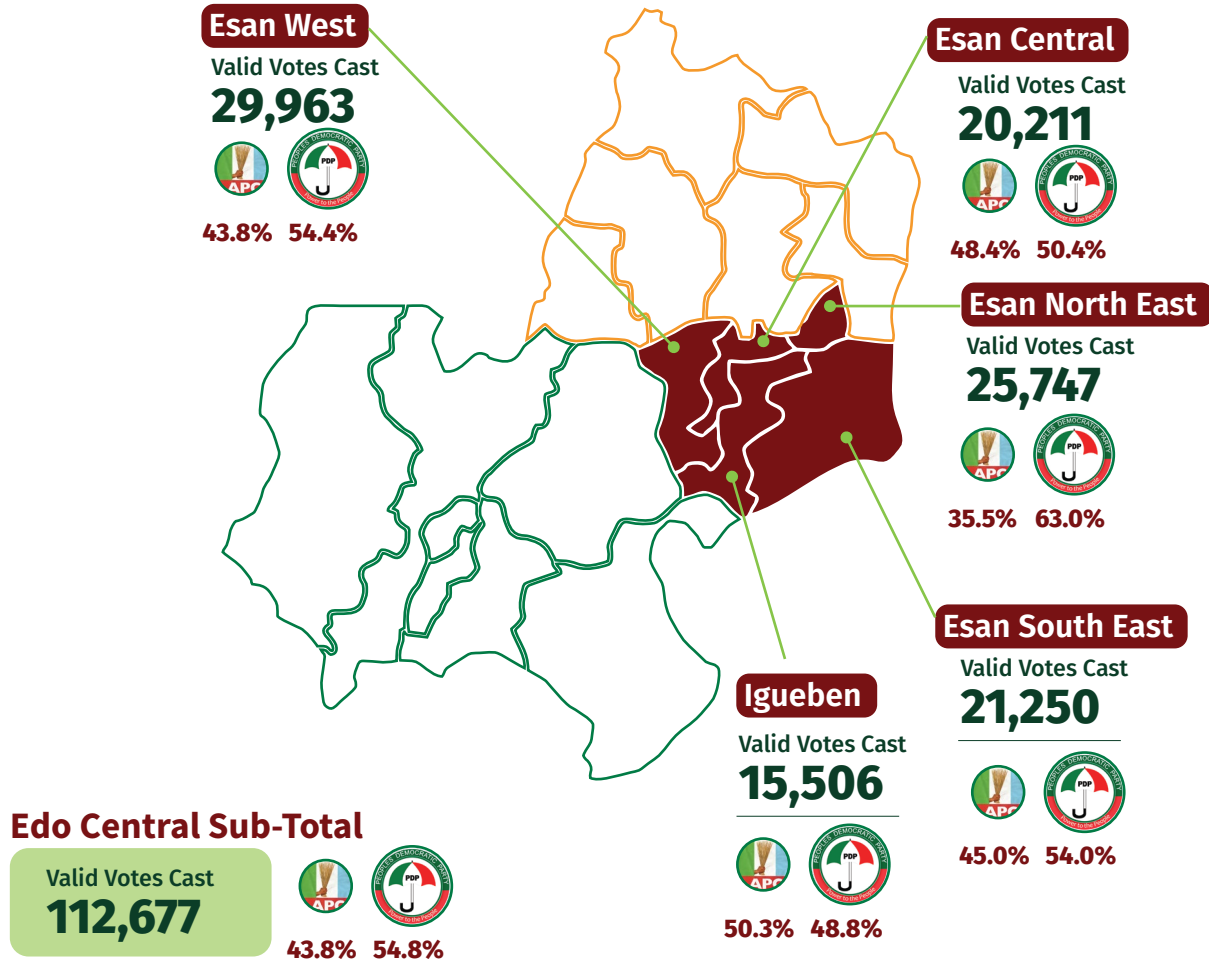


Valid and Rejected Votes in the 2016 Governorship Election

Valid and Rejected Votes by LGAs - Edo South

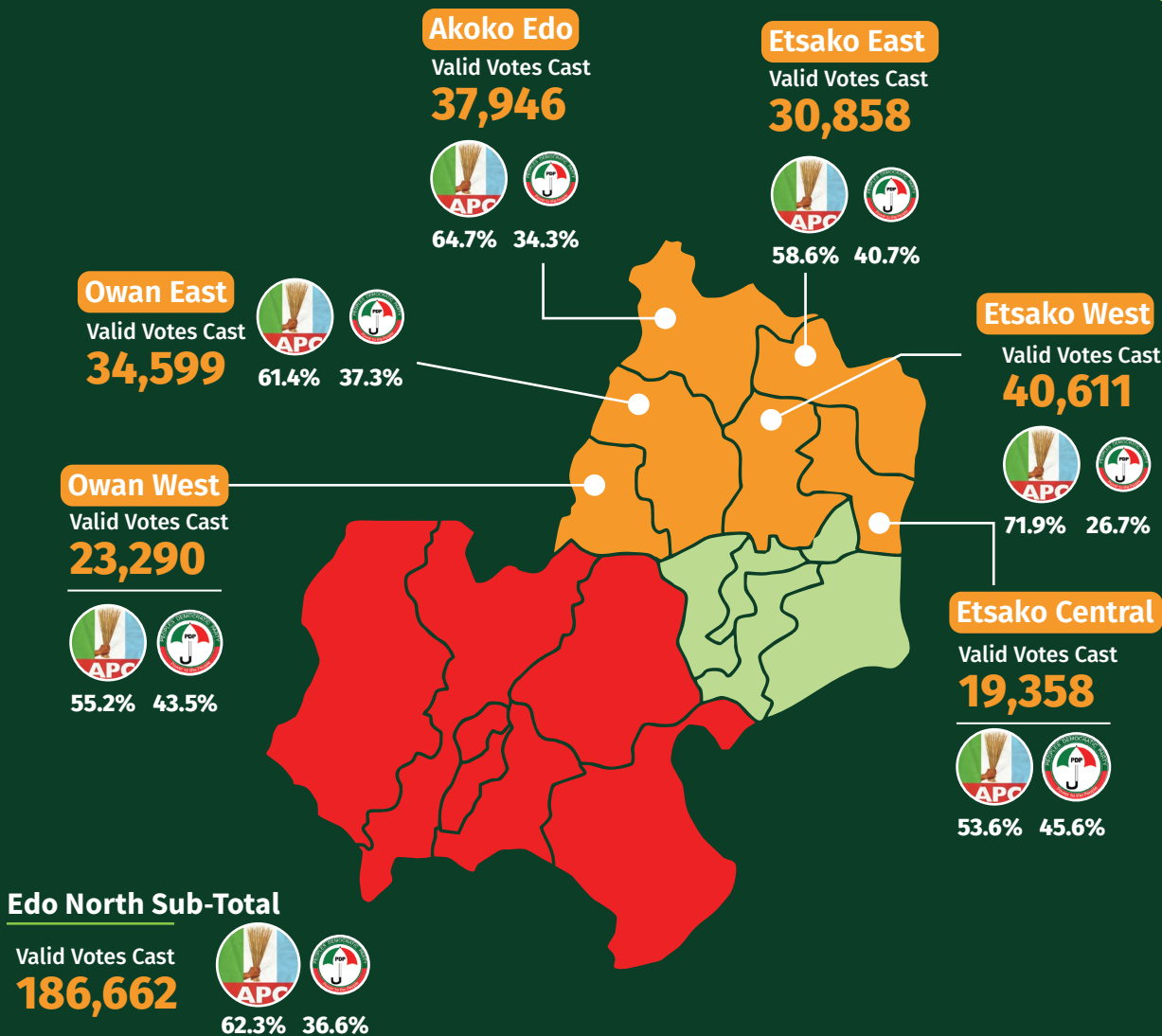


Votes received by APC and PDP in the 2016 Governorship Election



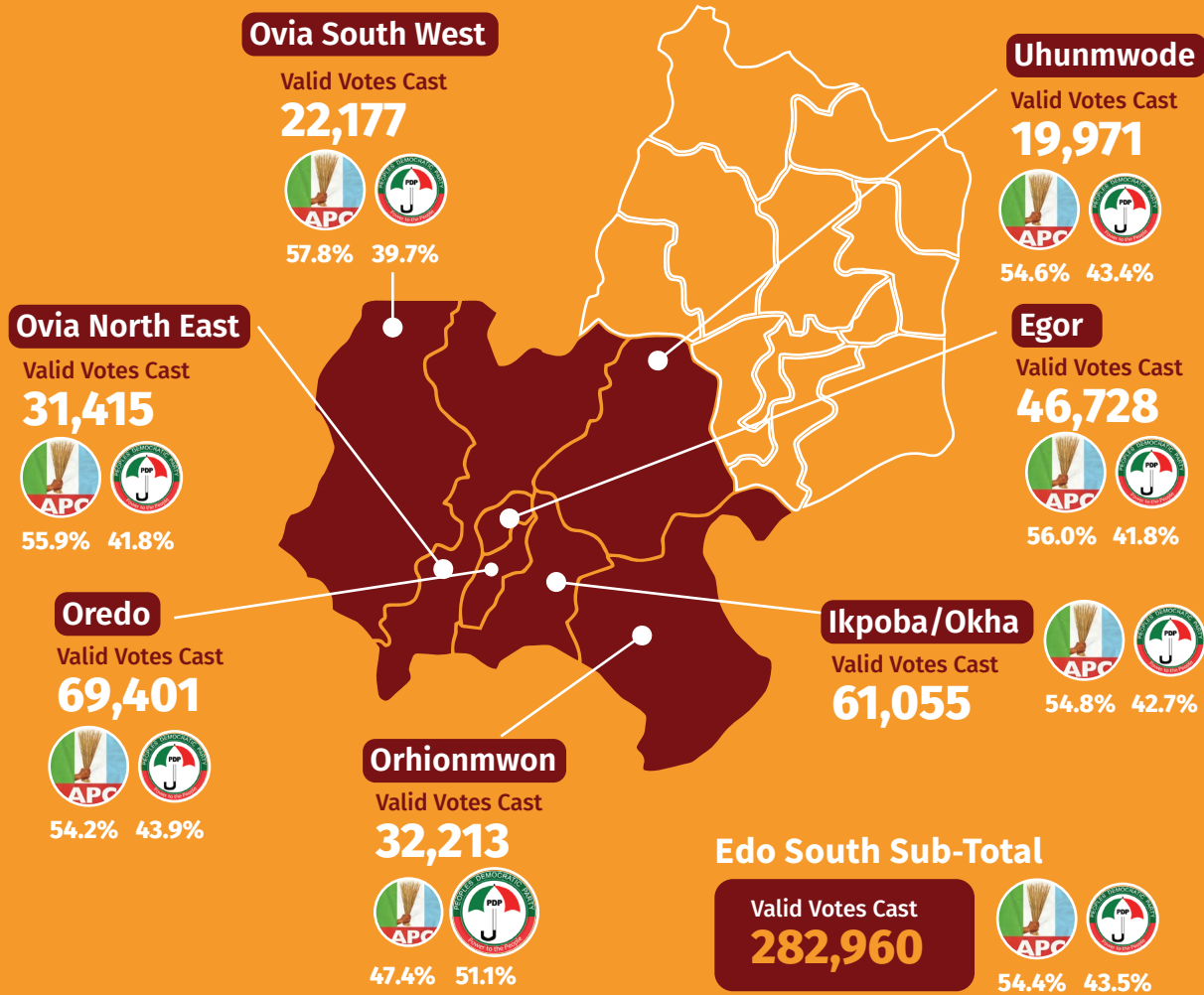


Votes received by APC and PDP in the 2016 Governorship Election





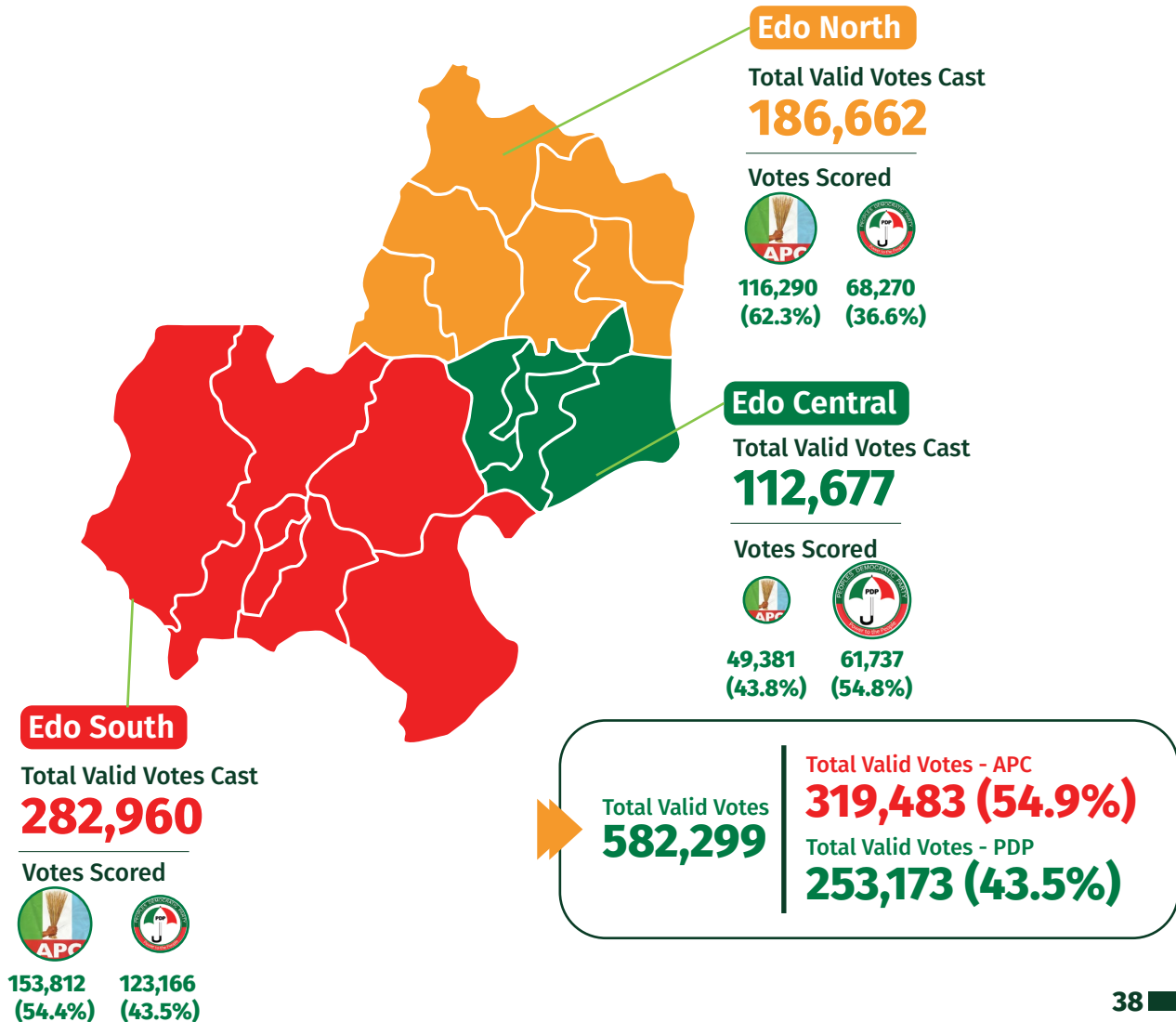
Votes received by APC and PDP in the 2016 Governorship Election





Votes received by APC and PDP in the 2016 Governorship Election

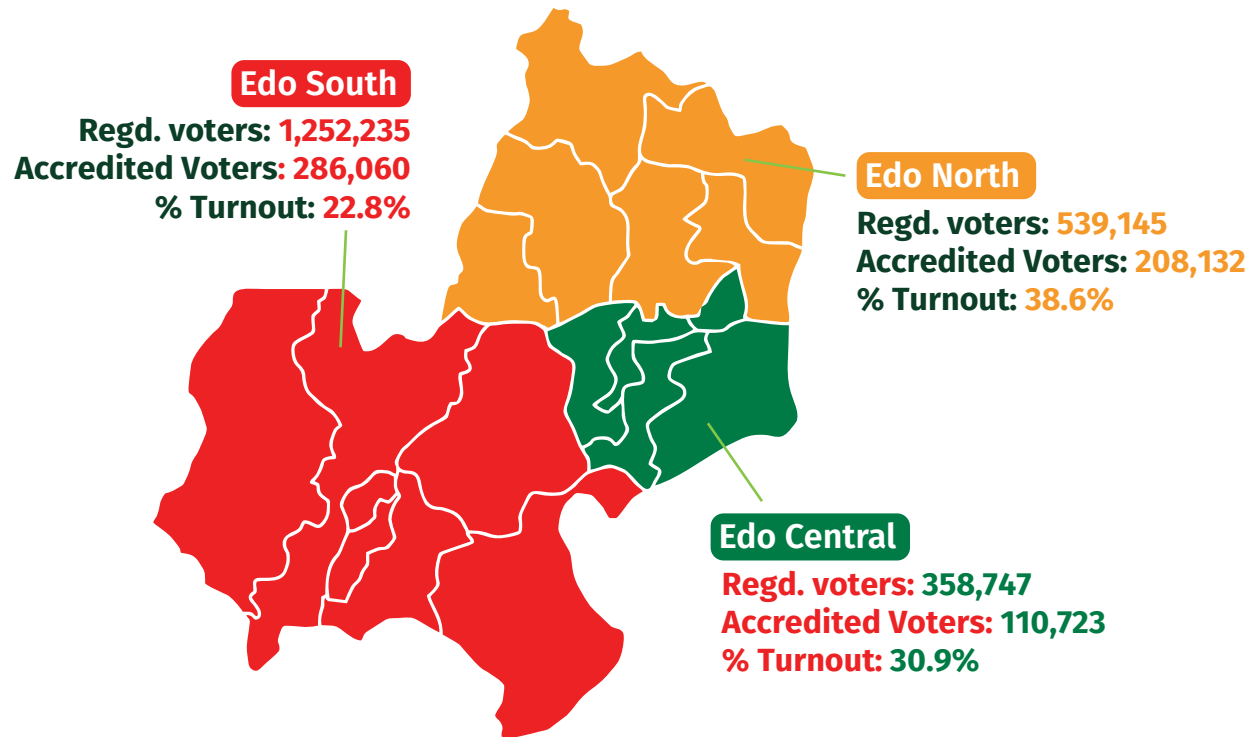
Votes received by Senatorial district





Voters Turnout in the 2019 Presidential Election

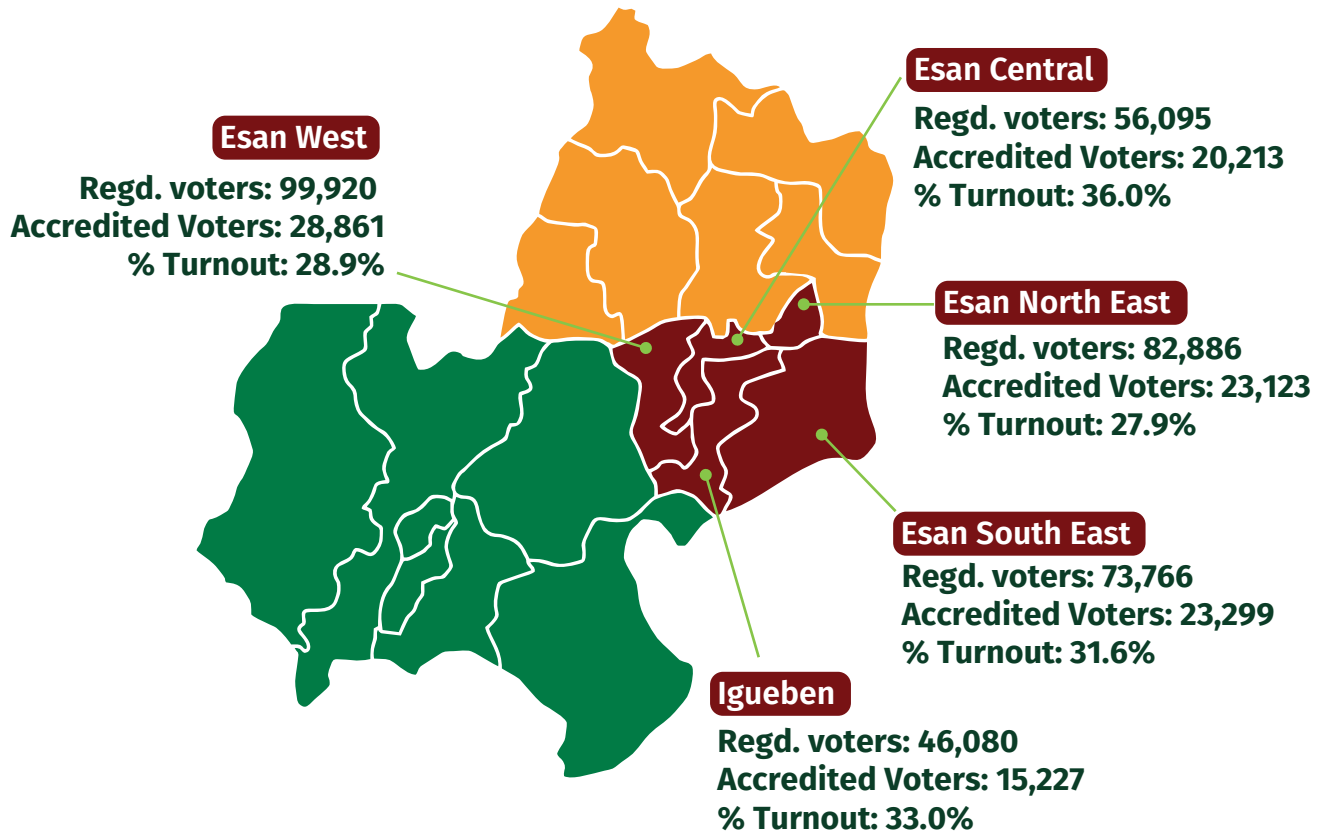
Voters Turnout by Senatorial district





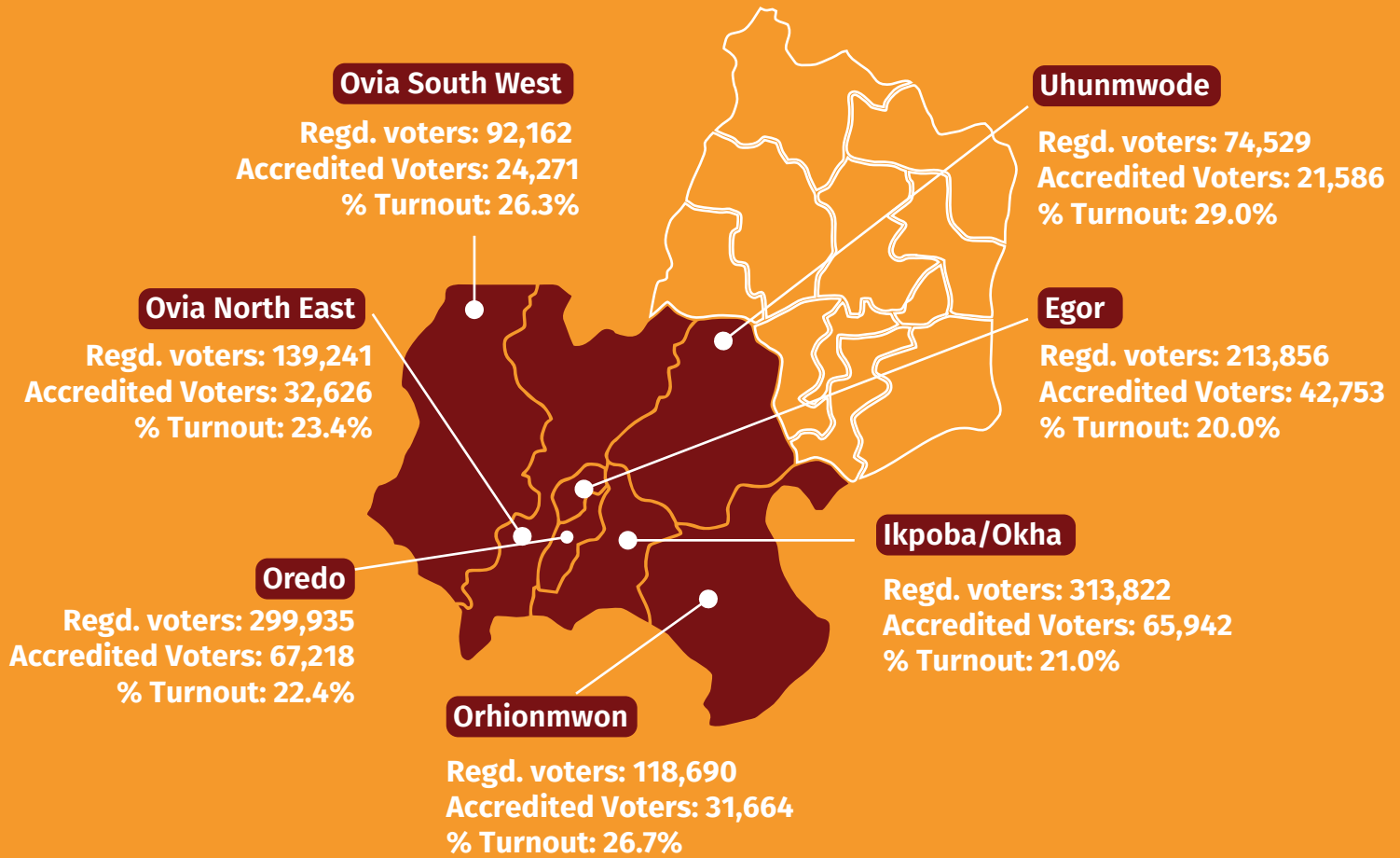
Voters Turnout in the 2019 Presidential Election

Voters Turnout by LGAs - Edo Central



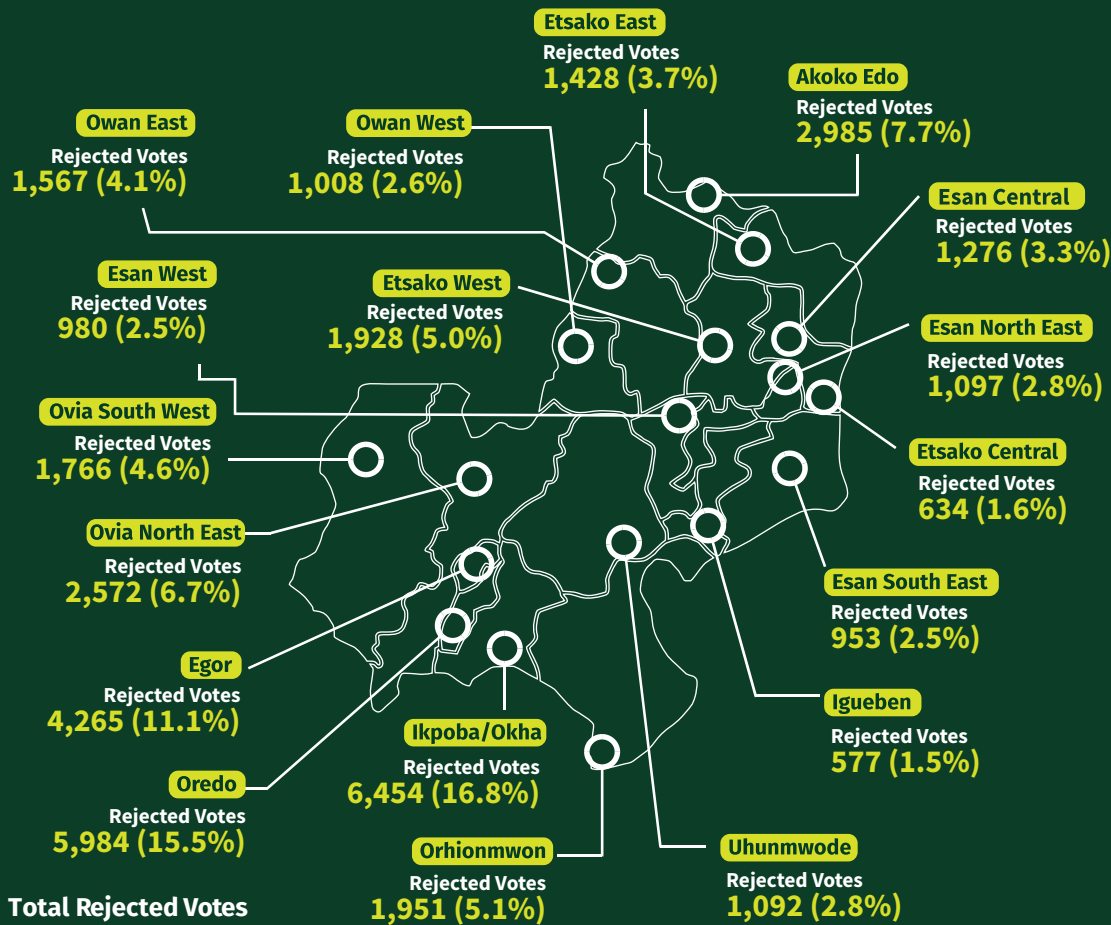
Voters Turnout in the 2019 Presidential Election

Voters Turnout by LGAs - Edo South



Valid and Rejected Votes in the 2019 Presidential elections

Rejected Votes Cast by LGA

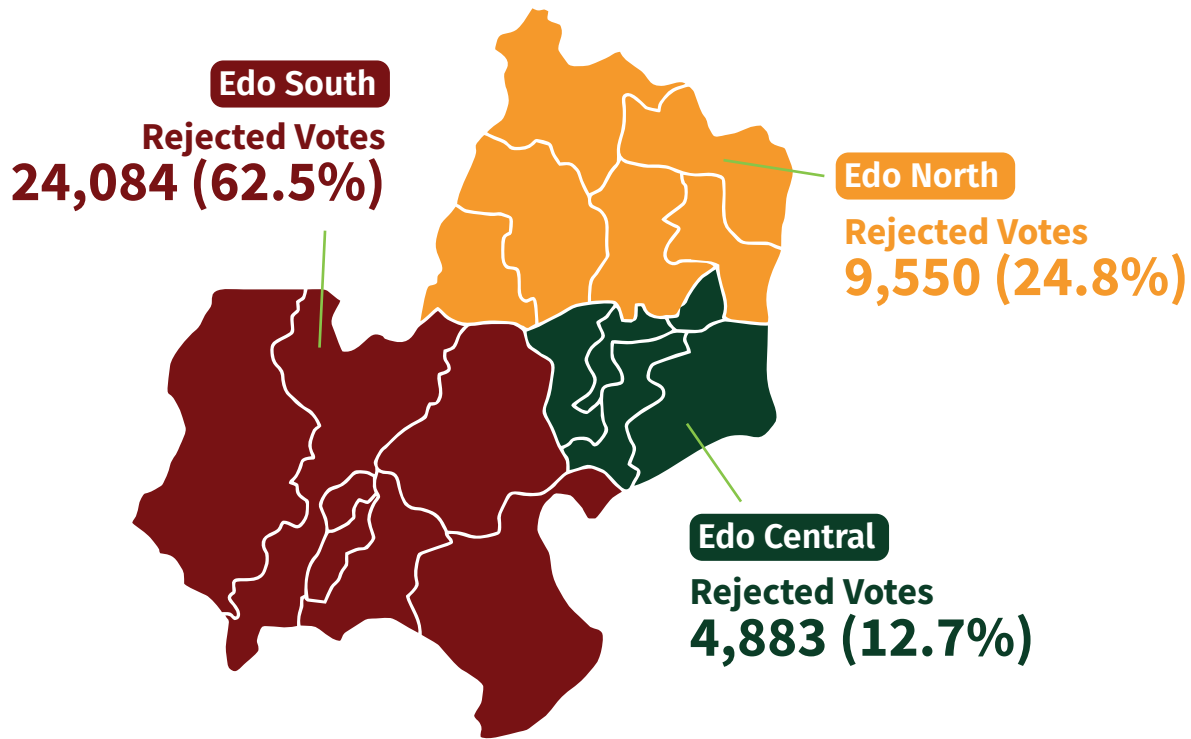


Total Rejected Votes

38,517

Valid and Rejected Votes in the 2019 Presidential elections

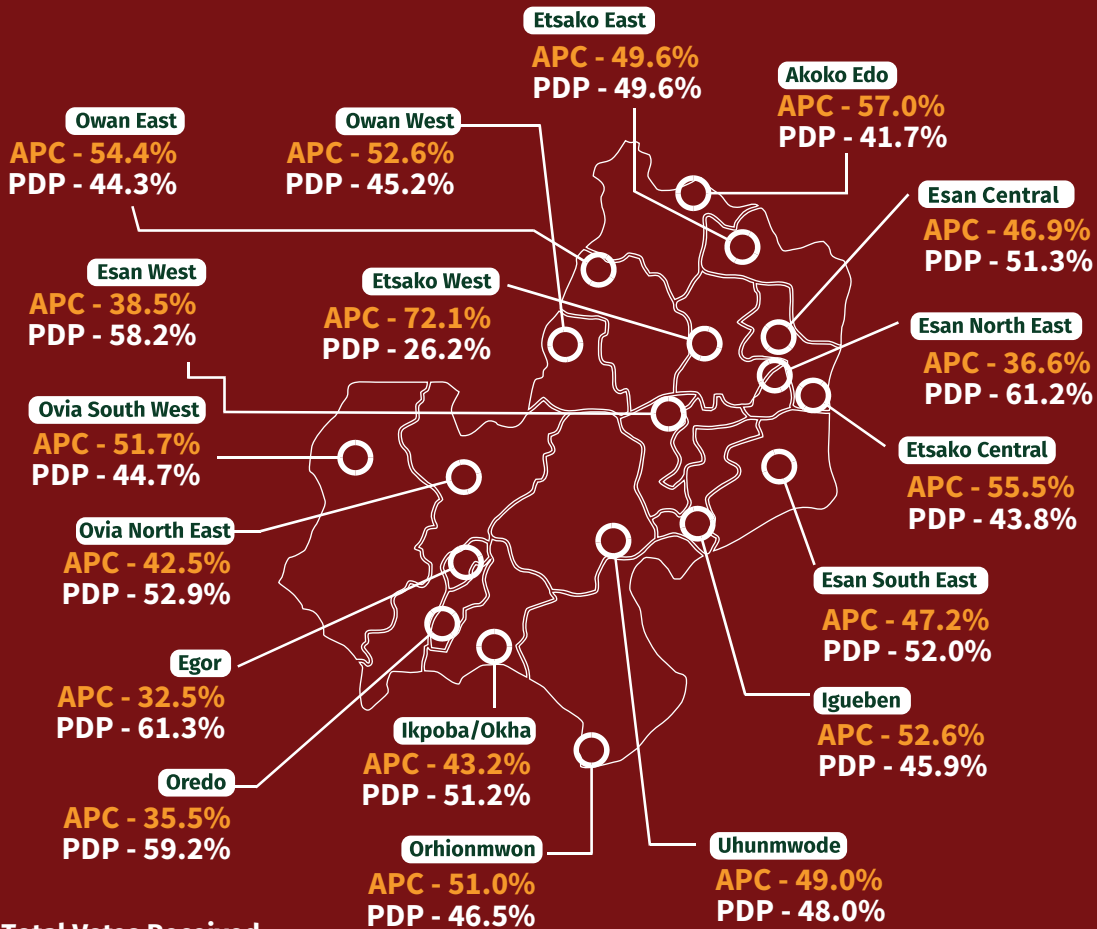
Rejected Votes Cast by Senatorial District





Votes Received by Political Parties in the 2019 Presidential elections

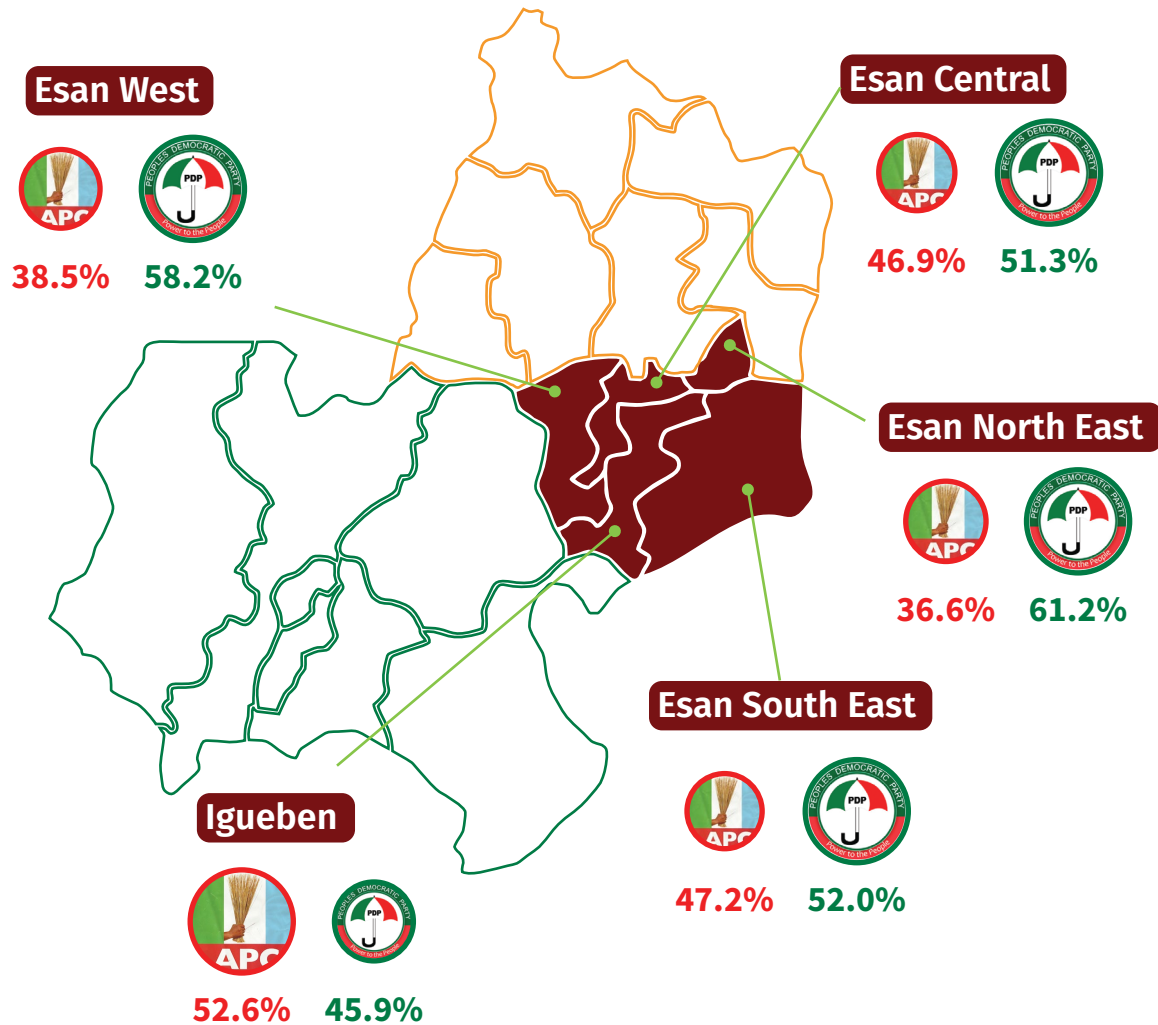
Votes Received by LGA





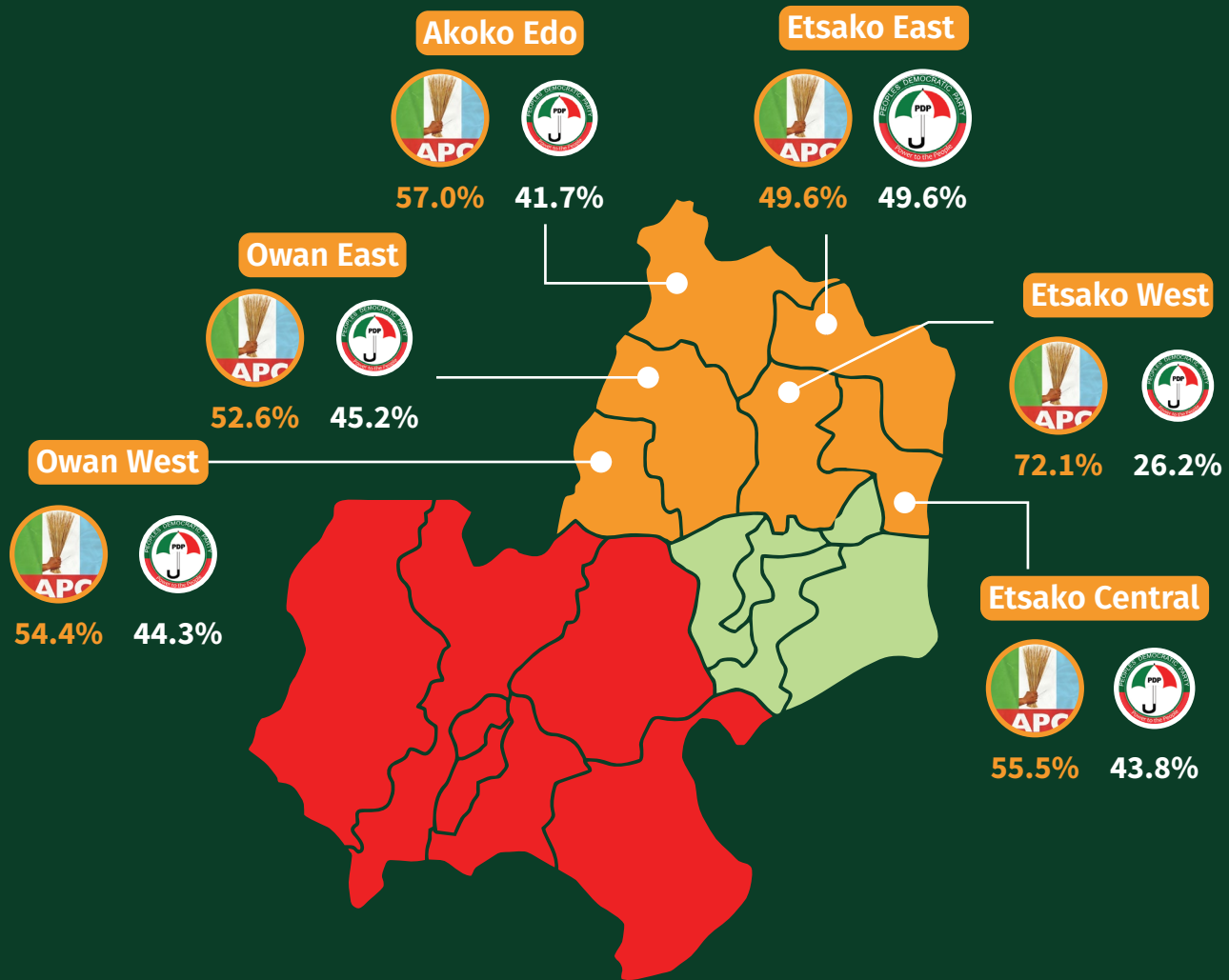
Votes Received by Political Parties in the 2019 Presidential elections

EDO CENTRAL

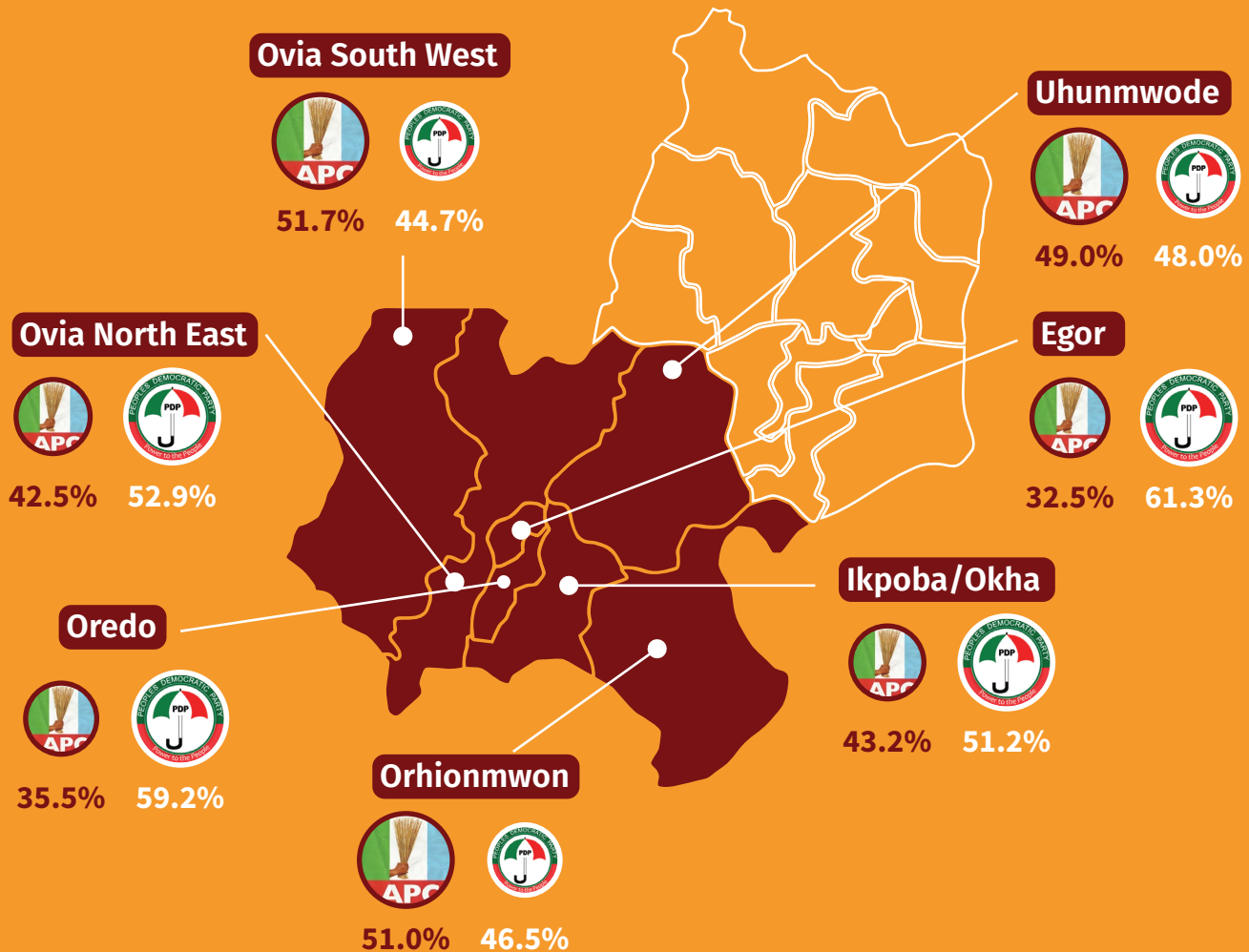




Votes Received by Political Parties in the 2019 Presidential elections EDO NORTH



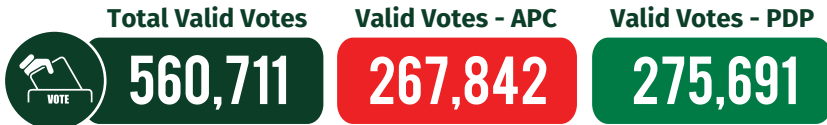
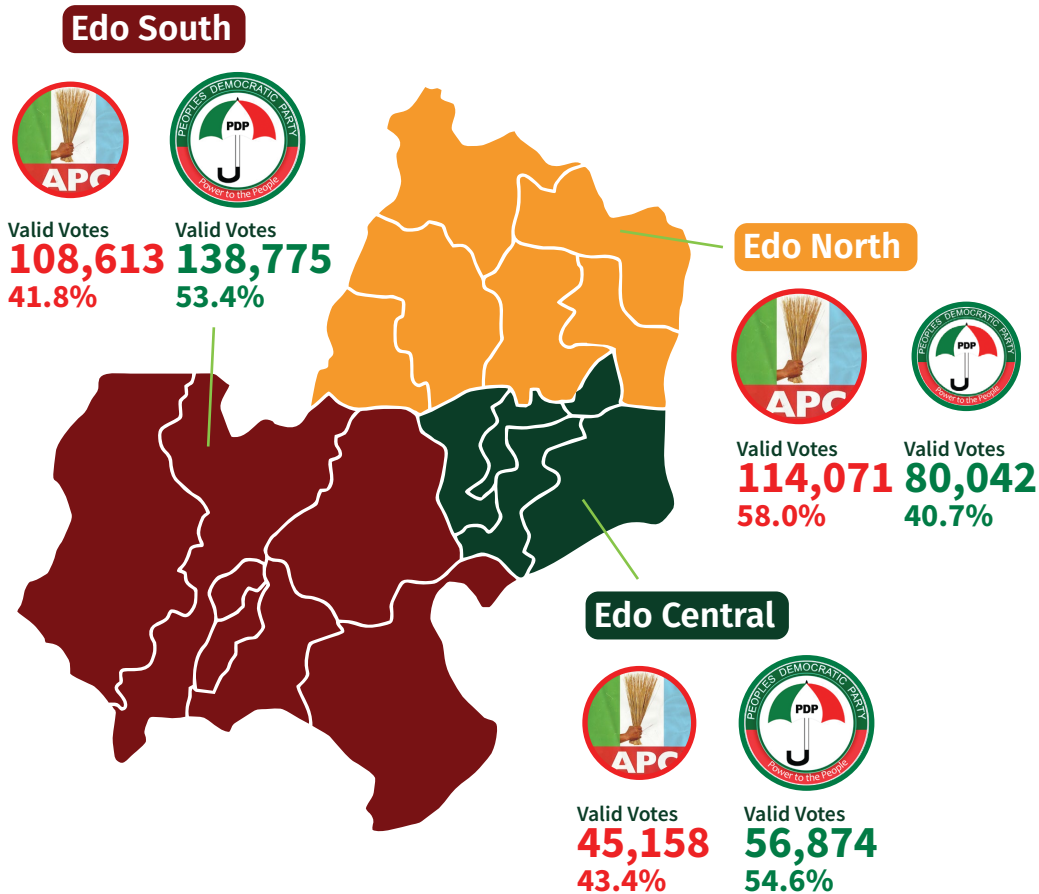
Votes Received by Political Parties in the 2019 Presidential elections EDO SOUTH





Votes Received by Political Parties in the 2019 Presidential elections

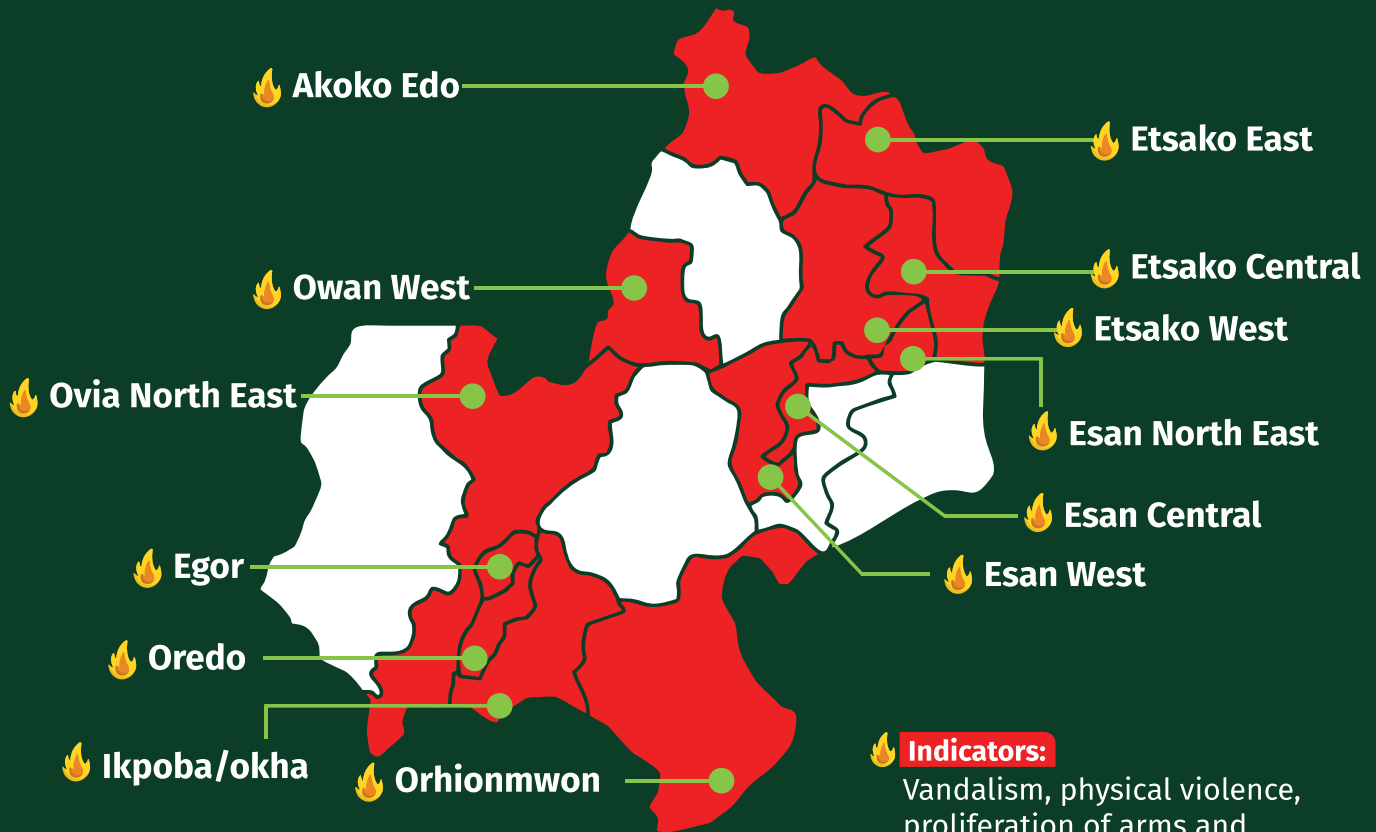
VOTES RECEIVED BY SENATORIAL DISTRICT





HOTSPOTS

Hotspots & Battleground Zones



Indicators:

Vandalism, physical violence, proliferation of arms and weapons, increased activities of cultists and hate speech



CITIZENS PERCEPTION SURVEY



71%

of respondents are very likely to vote in the election



68%

support INEC's decision to hold Nigeria's first off-cycle governorship election during the COVID-19 pandemic



42%

respondents are concerned that voters and election officials could contract the virus on election-day



Awareness on new COVID-19 voting guidelines is

27%





One-in-ten respondents have directly experienced violence and intimidation related to the elections



One-third have heard political candidates using hate speech during campaigns



Survey respondents expressed major concerns about violence carried out by political parties

56%

and security officials **48%** during the elections.



46%

respondents lack confidence in INEC's ability to promote credible elections





56%

of those surveyed were worried about the widespread practice of vote buying



39%

trust the police to protect the credibility of the election



Yiaga Africa Watching The Vote is a citizen-led election observation initiative aimed at enhancing the integrity of elections in Nigeria using technological tools like SMS and evidence-based research methodologies to further election observation. The initiative is designed to promote credible elections and boost citizens' confidence in the electoral process through citizen's observation of electoral activities in the electoral cycle.

Yiaga Africa is enhancing the quality of democracy in Nigeria using the WTV as a platform for promoting cuttingedge electoral policies, credible elections, civic participation and democratic consolidation.



 09038007744

 watchingthevote@yiaga.org

  @yiaga

 3, Frantz Fanon Street, 17th Road,
4th Avenue, Gwarimpa Estate, Abuja